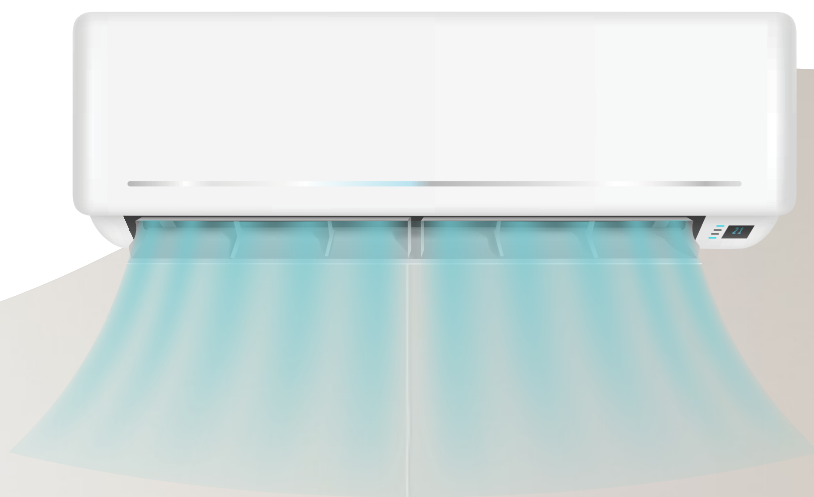




GREENBREEZE®



EUROPE



FRESH AIR

FRESH LIFE!



[www.green-breeze.eu](http://www.green-breeze.eu)





CAPACITOR

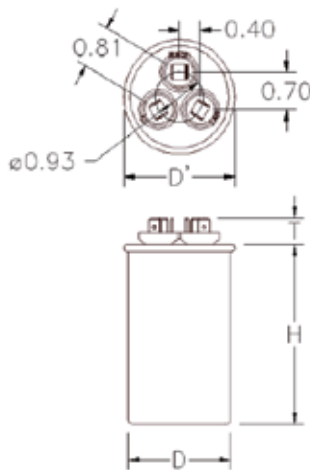
Overview:

The GREENBREEZE Capacitor is engineered to enhance the performance and longevity of electrical systems. With exceptional quality and reliability, these capacitors are designed to meet the demands of various applications, including HVAC systems, motor starters, and energy storage solutions.

- High Durability: Built to withstand high temperatures and challenging environments.
- Superior Efficiency: Optimizes energy usage, reducing power loss and enhancing system performance.

Usages:

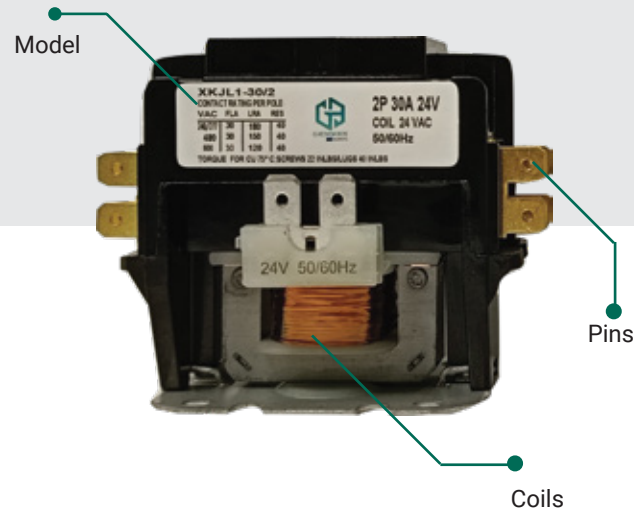
The products is suitable for home appliances like air- conditioners, air coolers, freezers and machine. etc



Capacitance (uF)	Voltage	Frequency	Temp Range	
5 uF	450V	50/60Hz	-400C-850C	
10 uF	450V	50/60Hz	-400C-850C	
15 uF	450V	50/60Hz	-400C-850C	
20 uF	450V	50/60Hz	-400C-850C	
25 uF	450V	50/60Hz	-400C-850C	
30 uF	450V	50/60Hz	-400C-850C	
35 uF	450V	50/60Hz	-400C-850C	
40 uF	450V	50/60Hz	-400C-850C	
45 uF	450V	50/60Hz	-400C-850C	
50 uF	450V	50/60Hz	-400C-850C	
55 uF	450V	50/60Hz	-400C-850C	
60 uF	450V	50/60Hz	-400C-850C	
65 uF	450V	50/60Hz	-400C-850C	
20 + 5 uF	450V	50/60Hz	-400C-850C	
30 + 5 uF	450V	50/60Hz	-400C-850C	
35 + 5 uF	450V	50/60Hz	-400C-850C	
40 + 5 uF	450V	50/60Hz	-400C-850C	
45 + 5 uF	450V	50/60Hz	-400C-850C	
50 + 5 uF	450V	50/60Hz	-400C-850C	
55 + 5 uF	450V	50/60Hz	-400C-850C	
60 + 5 uF	450V	50/60Hz	-400C-850C	
65 + 5 uF	450V	50/60Hz	-400C-850C	



# CONTACTOR



## Overview:

Our extensive product lineup includes a wide selection of contactors, ranging from 2-pole to 3-pole configurations, with various current and voltage ratings to suit diverse requirements. Whether you need a compact and efficient solution for residential applications or a rugged and robust contactor for industrial environments, we have you covered.

## Features

- Low VA coil for cooler operation and increased life
- Quiet operation
- Universal style mounting bracket fits existing mounting holes
- Double break contacts ensure positive make and break
- Screw terminals or lugs and quad 1/4" quick connects provided on all models for easy installation
- Long electrical life; tested to 250,000 cycles
- Superior copper coil
- Performance unaffected by mounting position

Model			Locked Rotor Amps	Resistive Amps
Poles	F/L Inductive Amps	Coil Voltage		
2 Pole	30 AMP	24V	180/150/120	40
2 Pole	30 AMP	240V	180/150/120	40
2 Pole	40 AMP	24V	240/200/160	50
2 Pole	40 AMP	240V	240/200/160	50
3 Pole	40 AMP	24V	240/200/160	50
3 Pole	40 AMP	240V	240/200/160	50



## THERMOSTATS

## Features

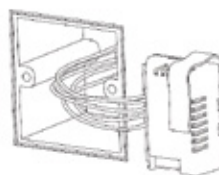
- Super modern appearance design, suitable for office, hotel and residential building
- Slim design, direct installation on 86×86mm box or 3×3inch box
- Stylish and elegant green/blue backlight with white colour ring
- 2-pipe integrated into one unit with easy configuration
- Big LCD display with English and icons
- Easy to install and set-up
- Time on/off function
- Selectable room temperature or setpoint temperature display
- Manual or automatic fan speed selection
- Energy saving mode activation by button press or dry contact (key card)
- Adjustment of display room temperature
- Temperature unit either °C or °F
- User setting can be kept when power off
- Freezing protection function available
- Lock or unlock keys or part of keys in Installer Set-up ( ISU )
- Heat and cool setpoint limitation for energy saving
- 24VAC power supply
- 230VAC fan load, 4A resistive and 2A inductive switch rating

## Setup Function Settings & Options

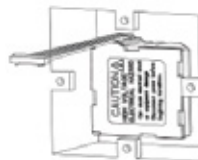
ISU Code	Description	Possible Options
1	System Type	0 Heat only
		1 Cool only
		2 Two pipes 1H1C manual(Default)
9	Temperature scale	0 °F
		1 °C(Default)
10	Fan Control Type	0 Auto only
		1 Constant only
		2 Both(Default)
18	Display Temperature Adjustment	-2 °C (-4 °F)
		-1.5 °C (-3 °F)
		-1 °C (-2 °F)
		-0.5 °C (-1 °F)
		0 °C (0 °F) (Default)
		0.5 °C (1 °F)
		1 °C (2 °F)
		1.5 °C (3 °F)
		2 °C (4 °F)
19	Temperature Display Mode	0 Display room temperature
		1 Display set point
		2 Display both (Default)
20	Heating Range Stop	10-32 °C Default 32 °C (50-90 °F Default 90 °F)
21	Cooling Range Stop	10-32 °C Default 10 °C (50-90 °F Default 50 °F)
22	Keypad Lock out	0 All keys are available(Default)
		1 System button is locked out
		2 Fan and System button are locked out
		3 All buttons are locked
23	Remote setback enable method	0 Hotel card NO
		1 Hotel Card NC
		2 Button (Default)
24	Remote setback heating setpoint	Range 10-21°C Default : 18 °C (Range 50-70°F Default : 64)
25	Remote setback cooling setpoint	Range 22-32°C Default : 26 °C (Range 72-90 °F Default : 79 °F)
27	Freeze Protection	0 Disabled (Default)
		1 Enabled

### Installation Step:

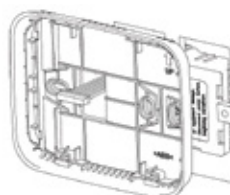
**Step 1**  
Pull wires through wire hole  
Loosen screw terminals, insert wires into terminal block, and then retighten screws



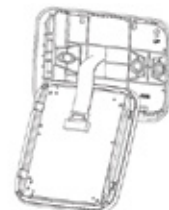
**Step 2**  
Push the Power box into the junction box.



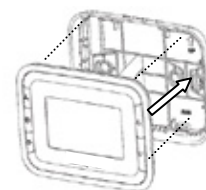
**Step 3**  
Place Back cover over junction box, insert and tighten mounting screws.



**Step 4**  
Insert the cable into connector on circuit board of thermostat.



**Step 5**  
Align the 4 tabs on the Back cover with corresponding slots on the back of the thermostat, and then push it until the thermostat snaps in place.





## GB6500E SMART LCD THERMOSTAT



## Appearance Features

1. LCD Display: High-end VA display with a wide viewing angle
2. Capacitive Touch Button
3. Ultra-thin 13mm
4. Side holes for heat ventilation and accurate room temp.

# Introducing the GreenBreeze GB6500E Smart LCDThermostat

## Instructions GB6500E LCD FCU

Take control of your home's climate with the GreenBreeze GB6500E, an advanced smart thermostat designed for effortless comfort, smart connectivity, and energy efficiency. Built for the modern home, the GB6500E offers full control—anywhere, anytime, putting comfort right at your fingertips.

Equipped with support for Google Assistant and Amazon Alexa, this thermostat seamlessly integrates with your voice-controlled ecosystem, allowing for hands-free adjustments. The GB6500E also works with smart room sensors to detect temperature variations and balance hot and cold spots, ensuring consistent comfort in every room.

With real-time alerts, intelligent scheduling, and intuitive touch controls, the GB6500E simplifies how you manage your home environment. Whether you choose the elegant white or sleek black finish, this thermostat enhances both performance and aesthetics.

## Highlighted Features:

- Works with Smart Room Sensors
- Smart Controls and Alerts
- Balances Hot & Cold Spots
- Energy Saving Technology
- Remote Access via Wi-Fi
- Compatible with Google Assistant & Amazon Alexa







## GB6500E SMART LED THERMOSTAT



## Introducing the GreenBreeze GB6500E LED Smart Thermostat

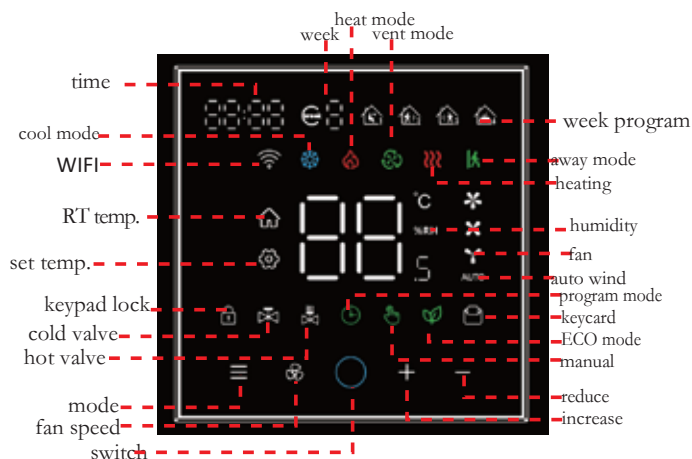
### Instructions GB6500E LED FCU

- 1.LED Display: High-end VA display with a wide viewing angle
- 2.Capacitive Touch Button
- 3.Ultra-thin 12mm
- 4.Side holes for heat ventilation and accurate room temp.

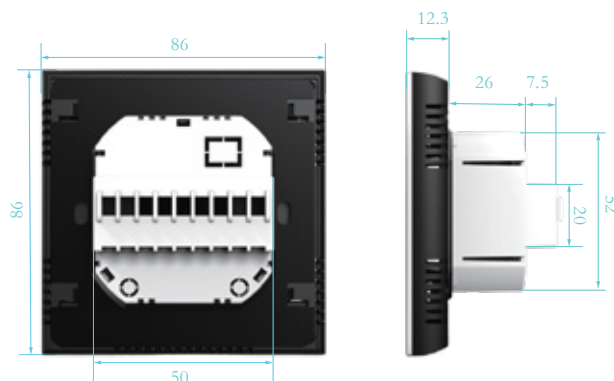
### Functional Features

- 1.High-Precision Temperature Display: Display accuracy of  $\pm 0.5^{\circ}\text{C}$ , with a temperature adjustment  $\pm 0.5^{\circ}\text{C}$ .
- 2.Power Failure Memory Function Safely saves all settings; no need to re-adjust after a power outage.
- 3.7-Day, 4-Time Period Programming: Flexible control to reduce energy consumption.
- 4.Child Lock Function: Prevents accidental operation by children, ensuring safety
- 5.Anti-Freezing Function: Protects home equipment from freezing under low temperatures
- 6.Building Control Communication: Employs an RS485 hardware interface executing the standard Modbus protocol, enabling a building control network with up to 32 thermostats connected in series.

### Product description

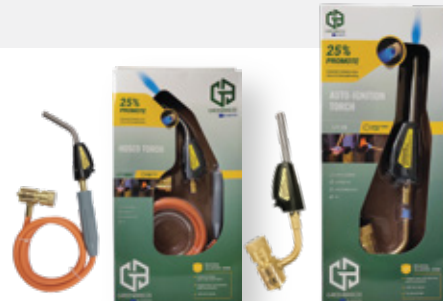


### Dimension Unit: mm



### Technical Specifications

- Power Supply Voltage: AC 85~250V, 50/60Hz
- Operating Environment:  $0^{\circ}\text{C}$  to  $50^{\circ}\text{C}$ , Relative Humidity  $\leq 90\%$ , non-condensing
- Storage Temperature:  $-10^{\circ}\text{C}$  to  $60^{\circ}\text{C}$
- Product Power Consumption:  $<1.5\text{W}$
- Temperature Sensor: NTC thermistor
- Temperature Setting Range:  $10^{\circ}\text{C}$  to  $32^{\circ}\text{C}$
- Temperature Display Accuracy:  $\pm 0.5^{\circ}\text{C}$
- Temperature Measurement Accuracy:  $\pm 1^{\circ}\text{C}$
- Display Screen: LED
- Buttons: Capacitive Touch Button
- Load Current: Resistive load 2A, Inductive load 1A
- Casing Material: ABS+PC, flame retardant rating UL94 V-0
- Dimensions: 86 x 86 x 12.3 mm (Width x Height x Depth)
- Mounting Hole Distance: EU or Standard Electric Box
- Wires on Terminals Wire 2\*1.5 mm<sup>2</sup> or 1x2.5 mm<sup>2</sup>



## GAS TORCH

Tip diameter:  
11.50mm

Secondary  
burner tube valve

Trigger-start  
igniter

### WT-8

#### DOUBLE TORCH FOR BIG OBJECT HEAT-TREATING

A 360° vertical swivel double-barrels torch and trigger-start ignition provide easy, one-hand accessibility to soldering&brazing&heating the bigger object jobs.

- The torch can be adjusted into one or two flames for the flexible applications
- Double flames can provide more heat distribution for soldering, brazing, heat-treating and automotive repair.
- For best performance, use with 400g PRO GAS, but Propane is also suitable with lower heat
- 100% rugged brass inter-structure to avoid the gas-leakage, 100% fire tested
- Advanced gas control system to easily adjust the size flame for different applications
- Flame stable for consistent performance when tilted or momentarily inverted

Tip diameter: 11.50mm

Trigger-start igniter

Secondary burner  
tube valve

Flame adjustable  
valve on handle

### WT-10

#### DOUBLE HOSE TORCH FOR ACCESSI- BILITY&MOBILITY AND BIG OBJECT

Easily access hard-to-reach soldering & brazing, and heat-treating jobs with the WT-10 Hose Torch. Features a hose and double flames for maximum accessibility and applications.

- The torch can be adjusted into one or two flames for the flexible applications
- Gas control valve on handle makes it easy to precision flame, ignite/extinguish the flame.
- 1.5M hose plus the belt hook for maximum accessibility and mobility.
- Double Turbo&swirl flame provide more heat distribution for soldering, brazing, heat treating and light welding
- For best performance, use with 400g PRO GAS, but Propane is also suitable with lower heat
- Brass tip and 100% rugged brass inter-structure to avoid the gas-leakage, 100% fire tested

### HT-1S660

#### HOSE TORCH FOR ACCESSI- BILITY AND MOBILITY

Easily access hard-to-reach soldering & brazing, and heat-treating jobs with the HT-1S660 Hose Torch. Features a hose for maximum accessibility.

- 1.5M hose plus the belt hook for maximum accessibility and mobility.
- Turbo&swirl flame provide more heat distribution for soldering, brazing, heat treating and light welding
- For best performance, use with 400g PRO GAS, but Propane is also suitable with lower heat
- 100% rugged brass inter-structure to avoid the gas-leakage, 100% fire tested

### HT-1S

#### 360° SWIVEL TORCH TO ACCESS TIGHT SPOTS

A 360° vertical swivel torch head and trigger-start igniter provide easy, one-hand accessibility to soldering&brazing&heating jobs in tight spaces.

- Turbo&swirl flame provide more heat distribution for soldering, brazing, heat-treating and automotive repair.
- For best performance, use with 400g PRO GAS, but Propane is also suitable with lower heat
- 100% rugged brass inter-structure to avoid the gas-leakage, 100% fire tested
- Advanced gas control system to easily adjust the size flame for different applications
- Flame stable for consistent performance when tilted or momentarily inverted

3 Years Warranty

#### AVAILABLE KITS

##### HT-1STK

HT-1S Torch Plus 1pc 400g PRO GAS Cylinder

## GREENBREEZE Mapp Gas Torch

GREENBREEZE extensive line of the Mapp gas torches and burners are ideal for brazing&soldering&heating applications on the Plumbing, HVAC, automotive repair, hardware and DIY jobs. It is famous for extremely turbo flame design of the maximum heating. These include heavy brass inter-structure and anti-flashback design that make the torch to be outstanding and safe to use.



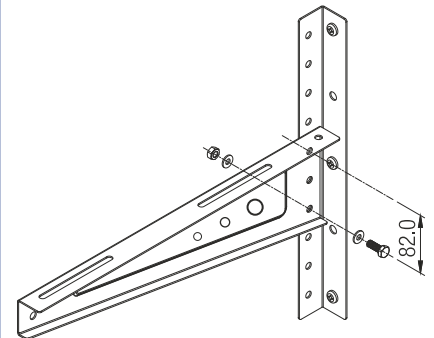
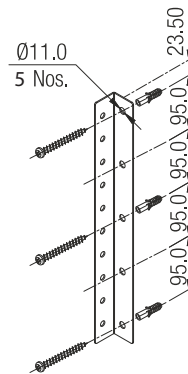
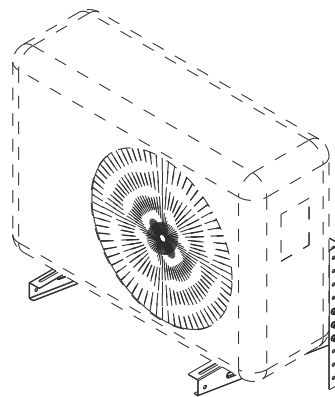
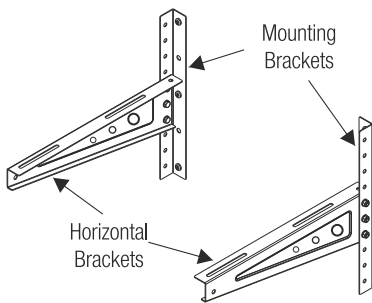
## AIR CONDITIONING BRACKET

### Overview:

Air conditioning brackets are often made of heavy-duty steel or other durable materials to support the weight of the air conditioner reliably. The material should be corrosion-resistant to withstand outdoor conditions.

### Features

- **Material:** AC brackets are typically made of durable materials such as steel, aluminum, or heavy-duty plastic to provide sturdy support for the air conditioning unit.
- **Adjustability:** Many brackets offer adjustable features to accommodate different sizes and weights of air conditioning units. This adjustability ensures a secure fit and proper support.
- **Capacity:** Brackets come with weight capacity ratings to ensure they can safely support the specific air conditioning unit. Capacity may vary depending on the size and design of the bracket.
- **Weather Resistance:** Outdoor AC brackets are often designed to withstand various weather conditions, including rain, snow, and UV exposure, to ensure long-lasting durability.



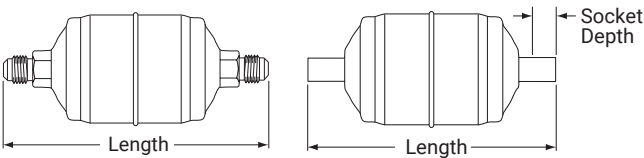
Model	Products Size	Max load weight	Color
AC D00	400 x 400 x 1.8 mm	150 KGS ( 400 LBS )	White
AC D02	550 x 550 x 2.0 mm	200 KGS ( 440 LBS )	White
AC D03	600 x 600 x 2.0 mm	250 KGS ( 550 LBS )	White





# LIQUID LINE FILTER DRIER

## PRODUCT FEATURE



## Overview:

Liquid line filter driers are essential components in air conditioning and refrigeration systems, tasked with removing moisture, contaminants, and debris from the refrigerant. Here are some typical features you might find in these products:

## Features

- **Filtration Capacity:** Liquid line filter driers are designed to trap contaminants and debris present in the refrigerant, preventing them from circulating through the system and causing damage to components such as compressors and expansion valves.
- **Moisture Removal:** One of the primary functions of filter driers is to absorb moisture from the refrigerant, preventing it from causing corrosion or icing within the system. The moisture removal capacity varies depending on the type and size of the filter drier.
- **Contaminant Removal:** Filter driers capture various contaminants, including dirt, acids, and solid particles, to maintain the cleanliness and efficiency of the air conditioning or refrigeration system.
- **Desiccant Material:** Filter driers contain desiccant materials such as molecular sieves or activated alumina, which have high adsorption capacity for moisture and contaminants.

Model	Size	Usage	Max. Working Pressure	Temp. Range
EK-162	1/4" SAE	HFC / HCFC / CFC	4.7 Mpa / 680 / PSIG	-40 to +70°C
EK-162S	1/4"ODF	HFC / HCFC / CFC	4.7 Mpa / 680 / PSIG	-40 to +70°C
EK-162S	3/8" SAE	HFC / HCFC / CFC	4.7 Mpa / 680 / PSIG	-40 to +70°C
EK-162S	3/8" ODF	HFC / HCFC / CFC	4.7 Mpa / 680 / PSIG	-40 to +70°C
EK-162S	1/2" SAE	HFC / HCFC / CFC	4.7 Mpa / 680 / PSIG	-40 to +70°C
EK-162S	1/4" ODF	HFC / HCFC / CFC	4.7 Mpa / 680 / PSIG	-40 to +70°C
EK-162S	5/8" SAE	HFC / HCFC / CFC	4.7 Mpa / 680 / PSIG	-40 to +70°C
EK-162S	1/4"ODF	HFC / HCFC / CFC	4.7 Mpa / 680 / PSIG	-40 to +70°C
EK-162S	3/4"SAE	HFC / HCFC / CFC	4.7 Mpa / 680 / PSIG	-40 to +70°C
EK-162S	7/8"SAE	HFC / HCFC / CFC	4.7 Mpa / 680 / PSIG	-40 to +70°C



## D-48 STANDARD CAPACITY

### PRODUCT FEATURE



### Overview:

Our D-48 series is designed to offer reliable and efficient solutions for your cooling and refrigeration needs. Explore our catalogue to discover the features, specifications, and benefits of our D-48 standard capacity products.

- **High Performance:** The D-48 series is engineered for optimal cooling and refrigeration performance, ensuring efficiency and reliability.
- **Durability:** Built with high-quality materials and advanced technology, D-48 products are designed for long-lasting durability and minimal maintenance.
- **Versatility:** Suitable for a variety of applications, including commercial refrigeration, air conditioning systems, and industrial cooling processes.

Block	R-22	R-134a	R-404A	Recommended Use
D-48	445	515	557	CFC's/Mineral Oil
H-48	697	756	771	High Moisture
W-48	435	476	490	High Acid/Burnout
UK-48	1331	1344	1274	POE Lubricants/ all refrigerants
RH-48	1037	1096	1090	Refrigerant Reclaim Max. Moisture
RW-48	532	583	600	Refrigerant Reclaim Max. Acid
RD-48	512	592	640	Refrigerant Reclaim Std. Capacity



1/8" - 1 1/8"  
TUBE CUTTER



1/8" - 1 1/8"  
TUBE CUTTER



FLARING TOOLS



PVC TAPE

## REFRIGERANT GAS



### 410a Refrigerant

- **Environmentally Friendly:** GREENBREEZE 410a is chlorine-free and does not contribute to ozone depletion, making it a sustainable choice for cooling applications.
- **High Energy Efficiency:** Engineered for optimal energy efficiency, GREENBREEZE 410a helps reduce electricity consumption and operating costs.
- **Wide Compatibility:** Compatible with most existing R-22 systems, GREENBREEZE 410a offers a seamless transition for retrofitting or new installations.
- **Reliable Performance:** With proven stability and reliability, GREENBREEZE 410a ensures consistent cooling performance in diverse conditions.



### 134a Refrigerant

- **Environmentally Friendly:** GREENBREEZE 134a is chlorine-free and has a low global warming potential (GWP), making it a sustainable choice for cooling applications.
- **High Efficiency:** Engineered for optimal cooling performance, GREENBREEZE 134a helps improve energy efficiency and reduce operating costs.
- **Versatile Application:** Suitable for a wide range of refrigeration and air conditioning systems, GREENBREEZE 134a offers versatility and reliability in various environments.
- **Safety Assurance:** GREENBREEZE 134a undergoes rigorous testing to ensure compliance with industry safety standards, providing peace of mind for users.



### 404a Refrigerant

- **Environmentally Friendly:** GREENBREEZE 404a has zero ozone depletion potential (ODP), making it a sustainable choice for commercial refrigeration applications.
- **High Efficiency:** Engineered for optimal performance in medium and low-temperature refrigeration systems, GREENBREEZE 404a helps improve energy efficiency and reduce operating costs.
- **Versatility:** Suitable for a wide range of commercial refrigeration applications, including supermarkets, cold storage, and food processing, GREENBREEZE 404a offers versatility and reliability.
- **Safety:** GREENBREEZE 404a undergoes rigorous testing to ensure compliance with industry safety standards, providing peace of mind for users.



### 407c Refrigerant

- **Environmentally Friendly:** GREENBREEZE 407c is a chlorine-free refrigerant with zero ozone depletion potential (ODP), making it a sustainable choice for cooling applications.
- **Energy Savings:** Enjoy reduced energy consumption and lower operating costs with GREENBREEZE 407c's high-efficiency cooling capabilities.
- **Reliability:** Count on GREENBREEZE 407c for consistent and dependable cooling performance, ensuring comfort and productivity.
- **Regulatory Compliance:** GREENBREEZE 407c complies with international environmental regulations, ensuring regulatory compliance and peace of mind.



GREENBREEZE UNIPESSOAL LDA  
Rua Da Praia Azul, Silveira  
Lisbon, Portugal  
[www.green-breeze.eu](http://www.green-breeze.eu)

## Marketed By:

---

Cannelle Holdings FZE  
P O Box 261660, Jebel Ali Free Zone  
Dubai, United Arab Emirates  
Tel: +971 4 8861858  
[www.cannelleholdings.com](http://www.cannelleholdings.com)