

CLI TUBES AND FITTINGS



Marketed By :
South Zone 2 , FZS2AD09
Tel: 04 8861858, Fax: 04 8861859

Cannelle Holdings FZE
Dubai , U.A.E



CLI: BLAZING THE TRAIL WITH INNOVATION AND EFFICIENCY

With an experience of over 15 years in the copper tube industry, Cannelle Holdings has evolved to be able to manufacture its own range of copper pipes and fittings 'CLI'

As a result of our prolific and loyal customer base, CLI has become a successful and known brand in the manufacture and distribution of copper tubes for, air conditioning, refrigeration, water supply and a variety of other commercial applications.

The reason for this speedy success is owing to the fact that we understand customer satisfaction is not only driven by innovative products but also efficiency in quality of service and products. Our employees take pride in ensuring we meet our customer needs and requirements: from timely deliveries to efficient sales and service departments, to utmost product quality.

Driven to Quality efficiency
CLI implements stringent testing methods and controls to ensure the highest quality of tubes reaches our customers. From acquiring raw materials to the final packaging; our tubes and fittings are tested at all stages of production and distribution until it reaches the final consumer. This ensures defects, if any, are immediately detected and dealt with.



COPPER TUBE PRODUCT RANGE

Material

Type DHP (UNS C12200) Copper. This material meets the requirements of ASTM B280.

Cleanliness and Appearance

As per the requirements of standard ASTM B280, any residue on the inside of the tube will not exceed 0.0035 gm/ft² (0.038 g/m²) Both the inside and outside diameter surfaces will be clean and bright, with the finish being smooth and free from silvers, scale, open grain and major metal defects such as inclusions. Level wound coils with insignificant surface damage, such as minor dents that will not interfere with the tubing's end use, will be shipped.



Product	Application	Temper	Standards
Refrigeration Tube	Air Conditioning Refrigeration Service	Annealed	ASTM B-280
ACR Tube (Cleaned, Capped and Greased)	Air Conditioning Refrigeration National Gas	Drawn	ASTM B-280
Tube Type L	Domestic Service, Fire Protection, Solar, Fuel Oil, HVAC and Natural Gas	Drawn	ASTM B-88

ACR Copper Tube Technical Data Refrigeration Coils - ASTM B280 (Soft Annealed)

O.D. (in)		Wall Thickness . In. (Nom)	Theoretical Weight		Rated internal Working Pressures	
			Kg/m Nominal	lb/ft Nominal	Annealed 150°F-56-7°C S=5, 100psi	Annealed 300°F-113.4°C S=4, 700psi
1/8	0.125	0.030	0.0516	0.0347	2613	2408
3/16	0.187	0.030	0.0854	0.0575	1645	1516
1/4	0.250	0.030	0.1196	0.0804	1195	1102
1/3	0.312	0.032	0.1624	0.1090	1017	937
3/8	0.375	0.032	0.1989	0.1340	836	770
1/2	0.500	0.032	0.2714	0.1820	618	569
5/8	0.625	0.035	0.3742	0.2510	525	484
3/4	0.750	0.035	0.435	0.3050	435	400
7/8	0.875	0.005	0.6768	0.4550	495	456
1 1/8	1.125	0.050	0.974	0.6650	420	387

(Suitable for R-410a Gas applications)

ACR HARD DRAWN STRAIGHT LENGTHS - ASTM B280

Standard Size, in.	O.D. (in)		Wall Thickness . In. (Nom)	Theoretical Weight		Rated internal Working Pressures	
				Kg/m Nominal	lb/ft Nominal	Hard Drawn 150°F-56-7°C S=10300psi	Hard Drawn 300°F-113.4°C S= 10000 psi
3/8	0.375	3/8	0.030	0.1876	0.126	1569	1524
1/2	0.500	1/2	0.035	0.3949	0.198	1341	1302
5/8	0.625	5/8	0.040	0.4240	0.285	1242	1206
3/4	0.750	3/4	0.042	0.5389	0.362	1086	1055
7/8	0.875	7/8	0.045	0.6768	0.455	1002	972
1 1/8	1.125	1 1/8	0.050	0.9740	0.655	850	825
1 3/8	1.375	1 3/8	0.055	1.3156	0.884	755	733
1 5/8	1.625	1 5/8	0.060	1.7016	1.14	702	682
2 1/8	2.125	2 1/8	0.070	2.6067	1.75	625	607
2 5/8	2.625	2 5/8	0.080	3.6895	2.48	577	560
3 1/8	3.125	3 1/8	0.090	4.9498	3.33	545	529
3 5/8	3.625	3 5/8	0.100	6.3878	4.29	522	506
4 1/8	4.125	4 1/8	0.110	8.0033	5.38	504	489

(Suitable for R-410a Gas applications)

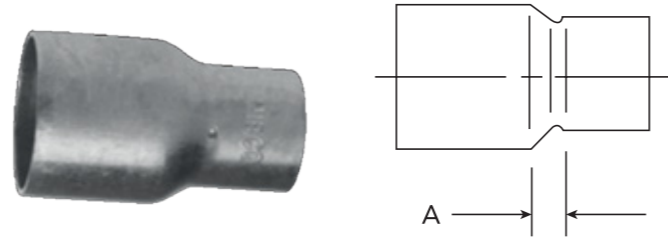
ACR COPPER TUBE (ECONOMY RANGE) TECHNICAL DATA

REFRIGERATION COILS SPECIAL WALL THICKNESS (ECONOMY) - SOFT ANNEALED								
Nominal Size of tube		Wall Thickness		Theoretical Mass	Lengths		Maximum Working Pressure	
(mm)	(in)	(mm)	(in)	(kg/m)	(m)	(feet)	(psf)	(Mpa)
6.35	1/4	0.61	0.024	0.098	15.24	50	1126.28	7.77
7.94	5/16	0.61	0.024	0.125	15.24	50	889.19	6.13
9.53	3/8	0.61	0.024	0.153	15.24	50	734.56	5.06
12.70	1/2	0.71	0.028	0.239	15.24	50	635.38	4.38
15.88	5/8	0.71	0.028	0.303	15.24	50	504.45	3.48
19.05	3/4	0.81	0.032	0.416	15.24	50	485.66	3.35
22.23	7/8	0.89	0.035	0.533	15.24	50	443.51	3.06
28.58	1 1/8	1.02	0.040	0.786	15.24	50	398.62	2.75

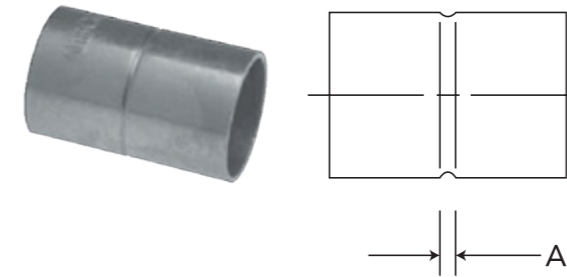
ACR TUBES SPECIAL WALL THICKNESS (ECONOMY)- HARD TEMPER

REFRIGERATION COILS SPECIAL WALL THICKNESS (ECONOMY) - SOFT ANNEALED								
Nominal Size of tube		Wall Thickness		Theoretical Mass	Lengths		Maximum Working Pressure	
(mm)	(in)	(mm)	(in)	(kg/m)	(m)	(feet)	(psf)	(Mpa)
9.53	3/8	0.61	0.024	0.152	5.8	19	1534.29	10.58
12.70	1/2	0.61	0.024	0.207	5.8	19	935.59	6.45
15.88	5/8	0.71	0.028	0.303	5.8	19	865.97	5.97
19.05	3/4	0.71	0.028	0.366	5.8	19	717.52	4.95
22.23	7/8	0.81	0.032	0.489	5.8	19	717.68	4.91
28.58	1 1/8	0.91	0.036	0.710	5.8	19	607.53	4.19
34.93	1 3/8	1.02	0.040	0.958	5.8	19	557.46	3.84
41.28	1 5/8	1.07	0.042	1.205	5.8	19	496.56	3.42
53.98	2 1/8	1.42	0.056	2.100	5.8	19	483.01	3.33
66.68	2 5/8	1.63	0.064	2.970	5.8	19	462.63	3.19
79.38	3 1/8	1.78	0.070	3.875	5.8	19	428.22	2.95
104.78	4 1/8	2.03	0.080	5.864	5.8	19	364.12	2.51

REDUCING COUPLING C x C - WROT

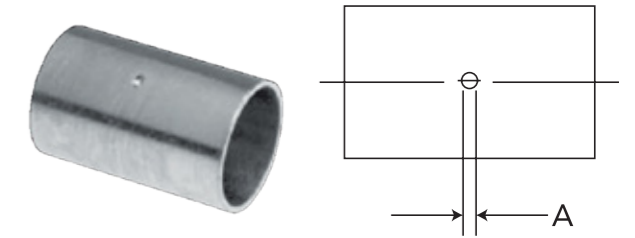


REDUCING COUPLING C x C - WROT		REDUCING COUPLING C x C - WROT	
NOMINAL SIZE	DIMENSIONS A INCHES	NOMINAL SIZE	DIMENSIONS A INCHES
1/8 x 3/16	5/32	2 1/8 x 3/4	17/32
5/16 x 1/8	1/4	2 1/8 x 1/2	7/16
1/4 x 5/16	3/16	2 1/8 x 13/8	11/16
1/4 x 1/8	3/16	2 1/8 x 1 5/8	9/16
3/8 x 1/4	3/16	2 5/8 x 1 1/8	29/32
3/8 x 5/16	1/4	2 5/8 x 1 3/8	13/16
3/8 x 1/8	1/4	2 5/8 x 1 5/8	11/16
1/2 x 1/8	11/32	2 5/8 x 2 1/8	1/2
1/2 x 1/4	1/4	3 1/8 x 1 5/8	11/32
1/2 x 3/8	3/16	3 1/8 x 2 1/8	15/16
5/8 x 1/4	13/32	3 1/8 x 2 5/8	1/2
5/8 x 3/8	11/32	3 5/8 x 3 1/8	17/32
5/8 x 1/2	3/16	4 1/8 x 2 1/8	1 3/8
3/4 x 1/4	11/32	4 1/8 x 2 5/8	1 1/8
3/4 x 3/8	3/8	4 1/8 x 3 1/8	27/32
3/4 x 1/2	5/16	4 1/8 x 3 5/8	19/32
3/4 x 5/8	3/16	5 1/8 x 2 1/8	2 1/32
1 1/8 x 3/8	13/32	5 1/8 x 2 5/8	1 15/16
1 1/8 x 1/2	11/32	5 1/8 x 3 1/8	1 11/16
1 1/8 x 5/8	3/8	5 1/8 x 4 1/8	1 3/8
1 1/8 x 3/4	11/32	6 1/8 x 2 1/8	2 9/16
1 3/8 x 1/2	7/16	6 1/8 x 2 5/8	2 7/16
1 3/8 x 5/8	19/32	6 1/8 x 3 1/8	2 3/8
1 3/8 x 3/4	17/32	6 1/8 x 4 1/8	1 3/4
1 3/8 x 1 1/8	5/16	6 1/8 x 5 1/8	1 3/8
1 5/8 x 1/2	1/2	8 1/8 x 2 5/8	3 3/8
1 5/8 x 3/4	3/8	8 1/8 x 3 1/8	3 3/32
1 5/8 x 1 1/8	9/16	8 1/8 x 4 1/8	2 19/32
1 5/8 x 1 3/8	5/16	8 1/8 x 6 1/8	1 19/32
2 1/8 x 1/2	23/32		



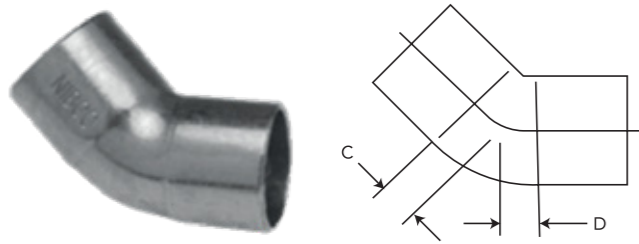
COUPLING WITH ROLLED TUBE STOP C x C - WROT

REDUCING COUPLING C x C - WROT	
NOMINAL SIZE	DIMENSIONS A INCHES
3/16	1/8
1/8	1/8
5/16	1/8
1/4	1/8
3/8	3/32
1/2	3/32
5/8	3/32
3/4	3/32
7/8	3/32
1 1/8	3/32
1 3/8	1/8
1 5/8	1/8
2 1/8	1/8
2 5/8	1/8
3 1/8	1/8
3 5/8	5/32
4 1/8	7/32



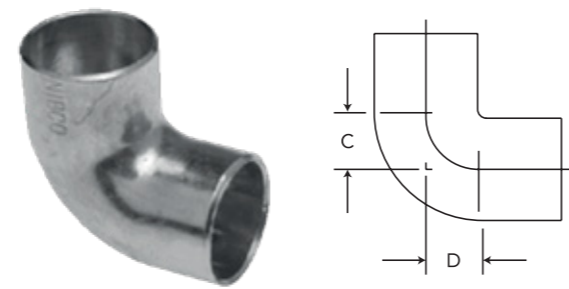
COUPLING WITH DIMPLED TUBE STOP C x C - WROT

COUPLING C x C - WROT	
NOMINAL SIZE	DIMENSIONS A INCHES
3/16	3/32
1/8	1/16
5/16	3/32
1/4	1/16
3/8	3/32
1/2	3/32
5/8	3/32
3/4	3/32
7/8	3/32
1 1/8	3/32
1 3/8	1/8
1 5/8	1/8
2 1/8	1/8
2 5/8	1/8
3 1/8	1/8
3 5/8	5/32
4 1/8	7/32
5 1/8	7/32
6 1/8	7/32
8 1/8	15/32



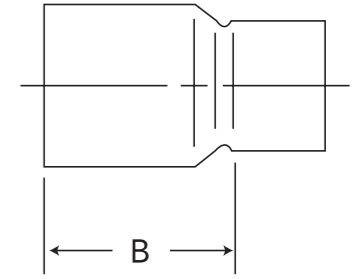
45° ELBOW C x C – WROT

45° ELBOW - CLOSE ROUGH	
NOMINAL SIZE	DIMENSIONS A INCHES
1/8	11/32
1/4	9/32
3/8	3/16
1/2	9/32
5/8	15/32
3/4	11/32
7/8	11/16
1 1/8	3/8
1 3/8	17/32
1 5/8	19/32
2 1/8	25/32
2 1/2	29/32
3 1/8	1 1/8
4 1/8	1 9/16
5 1/8	1 9/16
6 1/8	2 1/8
8 1/8	2 9/32



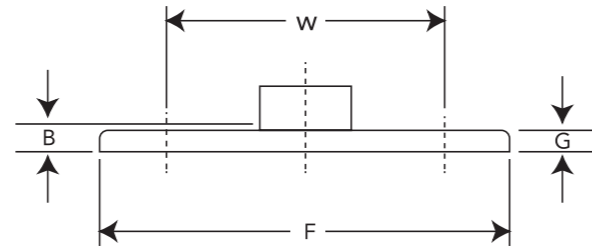
90° ELBOW – CLOSE ROUGH C x C - WROT

45° ELBOW - CLOSE ROUGH	
NOMINAL SIZE	DIMENSIONS A INCHES
1/8	13/32
1/4	3/8
3/8	1/2
3/8 x 1/4	-
1/2	11/32
1/2 x 3/8	21/32
3/4	1/2
3/4 x 1/2	25/32
3/4 x 5/8	7/8
7/8	29/32
1 1/8	21/32
1 x 1/2	-
1 x 3/4	1 1/16
1 3/8	15/16
1 1/4 x 1 1/8	1 15/32
1 5/8	1 1/32
1 1/2 x 1 1/4	1 3/32
2 1/8	1 13/32
2 1/8 x 1 1/2	1 1/4
2 5/8	1 5/8
3 1/8	2 1/8
3 1/2	2 7/16
4 1/8	2 16/32
5 1/8	3 1/32
6 1/8	3 5/8
8 1/8	4 21/32



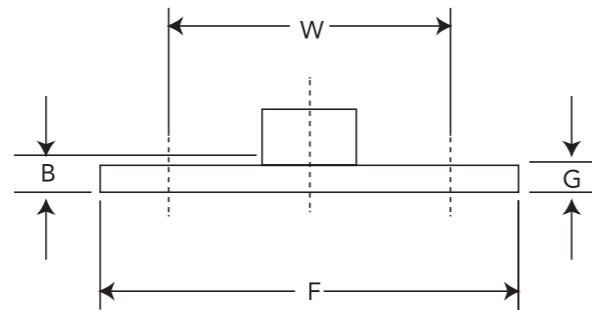
FITTING REDUCER FTG x C – WROT

FITTING REDUCER FTG x C - WROT		FITTING REDUCER FTG x C - WROT	
NOMINAL SIZE	DIMENSION B INCHES	NOMINAL SIZE	DIMENSION B INCHES
1/4 x 1/8	17/32	2 1/2 x 1 1/4	2 9/32
3/8 x 1/8	23/32	2 1/2 x 1 1/2	2 3/8
3/8 x 1/4	19/32	2 1/2 x 2 1/8	1 31/32
1/2 x 1/4	27/32	3 1/8 x 1 1/4	3 1/4
1/2 x 3/8	11/16	3 1/8 x 1 1/2	2 19/32
5/8 x 1/4	1 1/32	3 1/8 x 2 1/8	2 9/16
5/8 x 3/8	31/32	3 1/8 x 2 1/2	2 1/4
5/8 x 1/2	7/8	3 1/2 x 3 1/8	2 11/32
3/4 x 1/4	1 3/32	4 1/8 x 2 1/8	3 1/8
3/4 x 3/8	1 1/8	4 1/8 x 2 1/2	3 1/32
3/4 x 1/2	1 1/8	4 1/8 x 3 1/8	3 1/32
3/4 x 5/8	15/16	4 1/8 x 3 1/2	2 5/8
1 1/8 x 3/8	1 9/32	5 1/8 x 2 1/8	4 11/16
1 1/8 x 1/2	1 1/4	5 1/8 x 2 1/2	4 19/32
1 1/8 x 5/8	1 3/8	5 1/8 x 3 1/8	4 5/16
1 1/8 x 3/4	1 7/32	5 1/8 x 4 1/8	3 13/16
1 1/4 x 1/2	1 3/8	6 1/8 x 2 1/8	5 23/32
1 1/4 x 3/4	1 1/2	6 1/8 x 2 1/2	5 5/8
1 1/4 x 1 1/8	1 5/16	6 1/8 x 3 1/8	5 7/16
1 1/2 x 1/2	1 19/32	6 1/8 x 4 1/8	4 15/16
1 1/2 x 3/4	1 17/32	6 1/8 x 5 1/8	4 15/32
1 1/2 x 1 1/8	1 5/8	8 1/8 x 2 1/8	7 7/16
1 1/2 x 1 1/4	1 13/32	8 1/8 x 2 1/2	7 3/16
2 1/8 x 1/2	1 15/16	8 1/8 x 3 1/8	6 15/16
2 1/8 x 3/4	1 27/32	8 1/8 x 4 1/8	6 7/16
2 1/8 x 1 1/8	1 27/32	8 1/8 x 5 1/8	5 15/16
2 1/8 x 1 3/8	2 3/32	8 1/8 x 6 1/8	5 15/32
2 1/8 x 1 5/8	1 31/32		
2 5/8 x 1 1/8	2 9/32		



COMPANION FLANGE C-CAST

FLANGES - CLASS 125				
NOMINAL SIZE	DIM. B INCHES	DIM. F INCHES	DIM. G INCHES	DIM. W INCHES
1/2	1/8	3 1/2	7/32	2 3/8
3/4	1/8	3 7/8	7/32	2 3/4
1 1/8	1/8	4 3/8	1/4	3 1/8
1 3/8	1/8	4 5/8	1/4	3 5/8
1 5/8	1/8	5 1/8	5/16	3 7/8
2 1/8	1/8	6 1/8	3/8	4 3/4
2 1/2	1/8	7 1/8	3/8	5 1/2
3 1/8	1/8	7 5/8	7/16	6 1/8
4 1/8	1/8	9 1/8	7/16	7 5/8
5 1/8	1/8	10 1/8	7/16	8 5/8
6 1/8	1/8	11 1/8	1/2	9 5/8



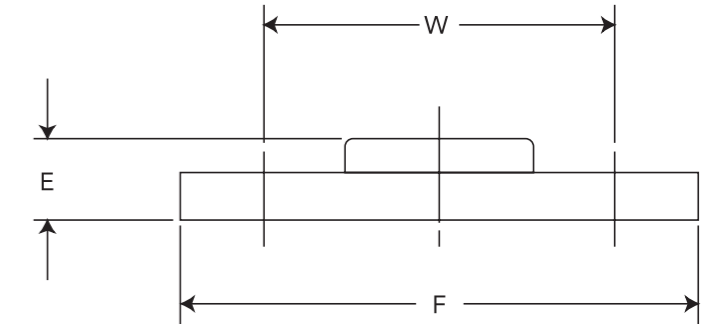
FLANGES CLASS 150

FLANGES - CLASS 150				
NOMINAL SIZE	DIM. B INCHES	DIM. F INCHES	DIM. G INCHES	DIM. W INCHES
3/4	1/8	3 7/8	11/32	2 3/4
1 1/8	1/8	4 1/4	3/8	3 1/8
1 1/4	1/8	4 5/8	13/32	3 5/8
1 1/2	1/8	5 1/8	7/16	3 7/8
2 1/8	1/8	6 1/8	1/2	4 3/4
2 1/2	1/8	7 1/8	9/16	5 5/8
3 1/8	1/8	7 5/8	5/8	6 1/8
4 1/8	1/8	9 1/8	11/16	7 5/8
5 1/8	1/8	10 1/8	3/4	8 5/8
6 1/8	1/8	11 1/8	13/16	9 5/8



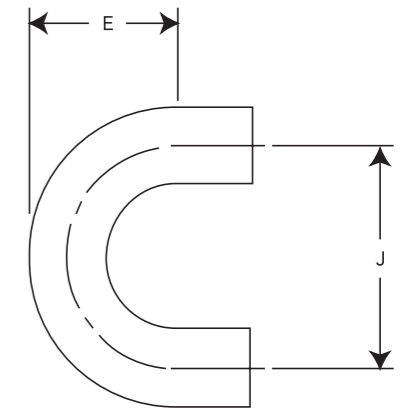
THREADED COMPANION FLANGE F-CAST

NOMINAL SIZE	DIM. E INCHES	DIM. F INCHES	DIM. W INCHES
2 1/8	1 1/8	6 1/8	4 1/8
2 5/8	1 3/16	7 1/8	5 1/2
3 1/8	1 3/16	7 5/8	6 1/8
4 1/8	1 3/16	9 1/8	7 5/8



RETURN BEND C X C - WROT

FLANGES - CLASS 125		
NOMINAL SIZE	DIM. E INCHES	DIM. G INCHES
1/8	21/32	1 1/8
1/4	31/32	1 1/4
3/8	13/32	1 5/8
1/2	1 5/8	2 1/8
3/4	1 19/32	2 5/8
1 1/8	2 3/32	3 1/8
1 3/8	2 13/16	4 1/8
1 5/8	3 5/32	4 1/2
2 1/8	3 29/32	5 1/2



698 SUCTION LINE P-TRAP C X C - WROT

SUCTION LINE P - TRAP				
NOMINAL SIZE	DIM. C INCHES	DIM. D INCHES	DIM. J INCHES	DIM. K INCHES
1/2	5 3/8	3 1/8	3 1/8	6 1/8
5/8	5 3/8	2 7/8	3 1/8	6 1/8
3/4	5 3/8	2 21/32	3 1/8	6 1/8
1 1/8	5 1/4	2 21/32	2 31/32	6 3/8
1 1/2	5 17/32	3 1/32	3 3/4	6 1/4
2 1/8	7 29/32	3 25/32	5 1/8	8 25/32
2 1/2	8 9/32	3 29/32	6 1/8	9 13/32

