

DECLARATION:

Greenbreeze retains the sole right to change product design and or specifications without notice. Images presented herein may differ significantly from the delivered products. Information contained herein is for general consideration only as our products are subject to change. Nanyoo is the sole interpreter of the information provided within this catalogue.



GREENBREEZE UNIPessoal LDA
Rua Da Praia Azul, Silveira
Lisbon, Portugal
<http://www.green-breeze.eu>

Marketed By:
Cannelle Holdings FZE
P O Box 261660, Jebel Ali Free Zone
Dubai, United Arab Emirates
Tel: +971 4 8861858
<http://www.cannelleholdings.com>

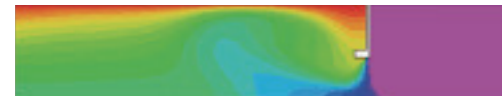


*FRESH AIR
FRESH LIFE!*

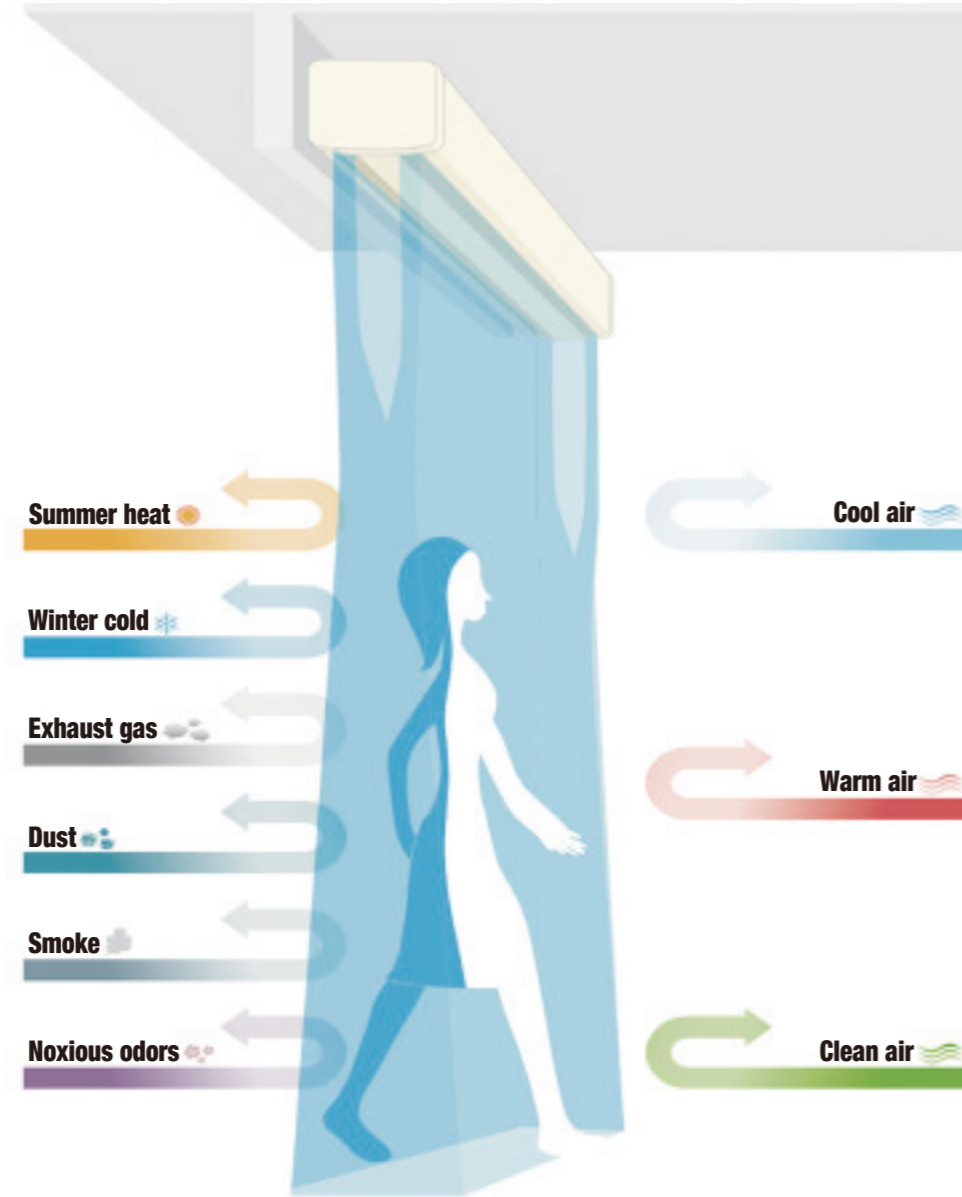
SAVING 90% ENERGY



Before Prior to installation



After installation



CONTENT



Motor

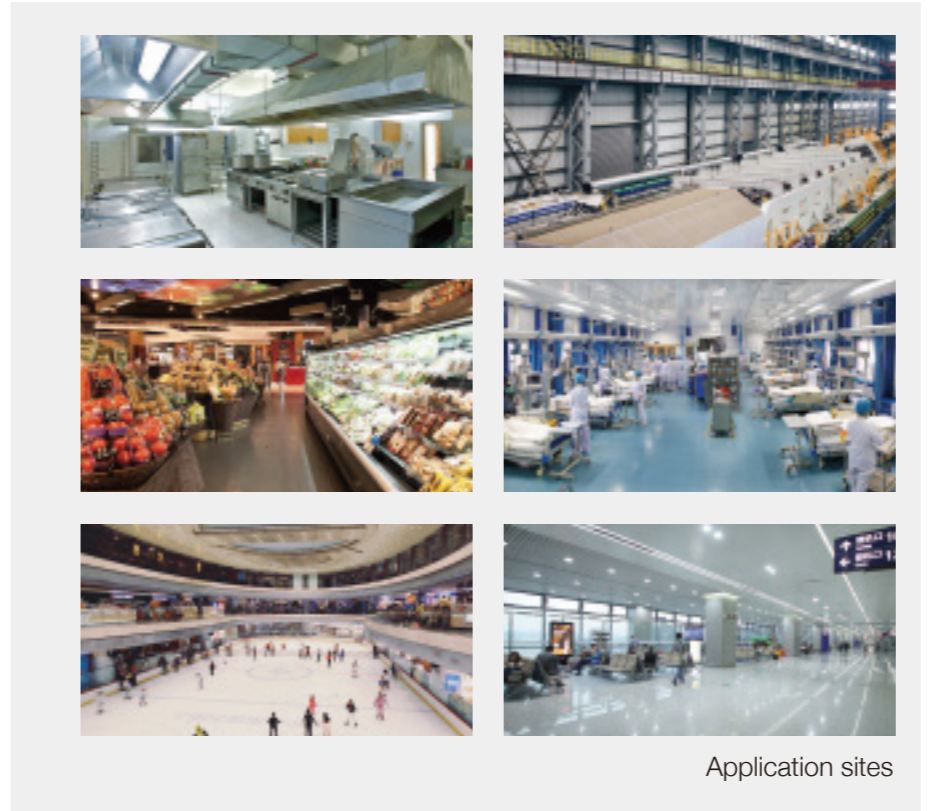
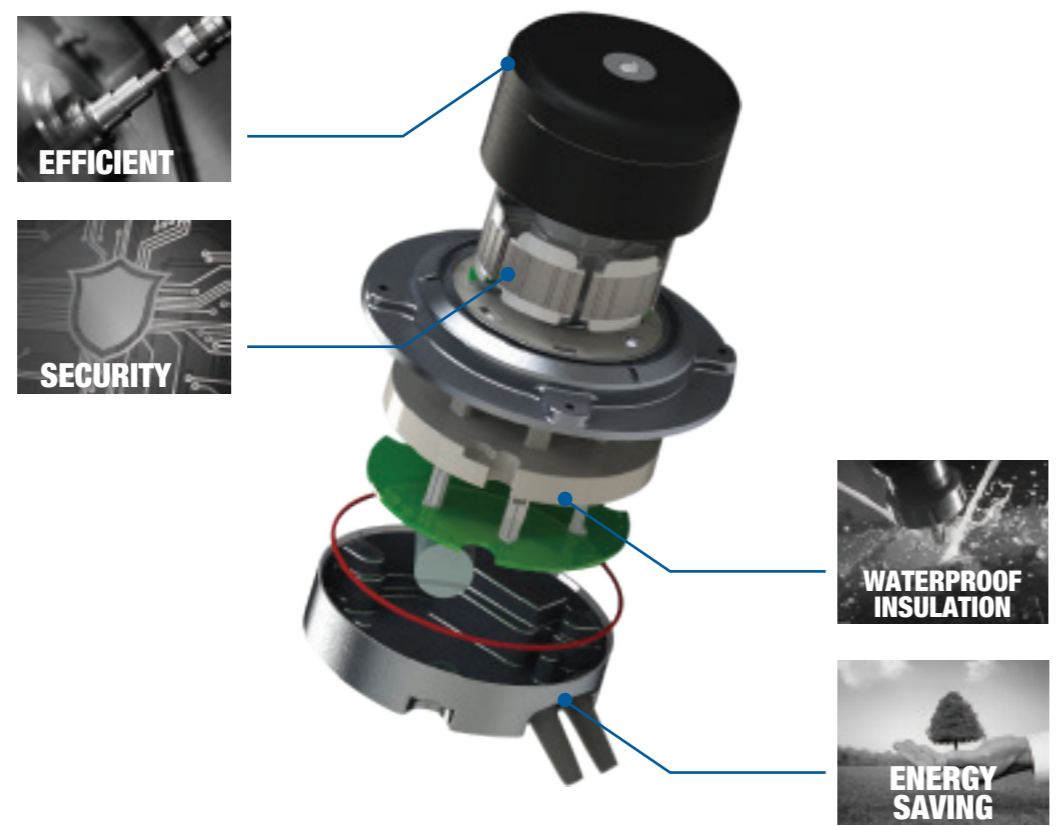
01

T3	03-04
G3	05-06
N	07
SUPER UV LIGHT GERMICIDAL AIR CURTAIN	08
T1	09-10
QS	11
Z	12
N	13
XD	14
Large Air Volume Industrial Air Curtain	15-16
INDUSTRIAL AIR CURTAIN-CENTRIFUGAL TYPE	17
COLD ROOM AIR CURTAIN	18
CC	19-20

MOTOR

Key component technology-motor

- Mainly using NSK bearing
- Using pure copper winding
- Max temperature tolerance 135℃
- Balance ratio(run out) only 0.35mm
- Super quiet and anti-vibration design



Application sites



View of workshop

★ Invention Patent No. : CN201610704561.9
 ★ Design Patent No. : CN202130701381.7



NEW

- **Fashionable appearance design:** Applying frosted aluminum, high-end and elegant, easy for cleaning.
- **Unique air duct and air inlet design:** bringing powerful, smooth and even air flow making a great air curtain effect, the installing height will be roundly 0.3m higher than competitor.
- **High efficiency motor:** Adopting self-made motor, powerful, lower noise and more reliable.
- **Multi-control ways:** With new generation of remote control receiver and manual key design, the operation is more convenient, standard two speeds, three speeds for option, which is suitable for a variety of places.
- **Intelligent magnetic door switch (Optional):** Realize humanized control of door opening and closing, greatly reduce indoor air outflow and save energy

T3

**CROSS FLOW
 AIR CURTAIN**
 SIMPLE AND TASTEFUL



Parameters

Model	Voltage/ Frequency (V/Hz)	Diameter of Impeller (mm)	Input Power (W)		Air Velocity (m/s)		Air Volume (m³/h)/CFM		Noise (dB)		Net Weight (KG)	Gross Weight (KG)	Unit Size (mm)	Mounting Height (m)
			H	L	H	L	H	L	H	L				
FM-1209T3-2(Y)	220/50	120	125.4	85.2	11.1	10	1600/941	1400/823	≤54	≤50	12.5	14.6	900*220*197	2.3-3
FM-1209T3-2(Y)	220/60	120	129.8	94.4	13	11	1800/1058	1600/941	≤56	≤52	12.5	14.6	900*220*197	2.3-3
FM-1212T3-2(Y)	220/50	120	168	128.6	11	9.1	1750/1029	1500/882	≤57	≤53	15.6	17.4	1200*220*197	2.3-3
FM-1212T3-2(Y)	220/60	120	173	98.5	12.7	10.4	2000/1176	1800/1058	≤56	≤52	15.6	17.4	1200*220*197	2.3-3
FM-1215T3-2(Y)	220/50	120	220	187	11.2	9.3	2200/1294	1900/1117	≤58	≤54	17.5	19.3	1500*220*197	2.3-3
FM-1215T3-2(Y)	220/60	120	223	198	12.7	10.4	2500/1470	2100/1235	≤58	≤54	17.5	19.3	1500*220*197	2.3-3



CB CE 

NEW

G3

CROSS FLOW AIR CURTAIN

11cm Air Wheel

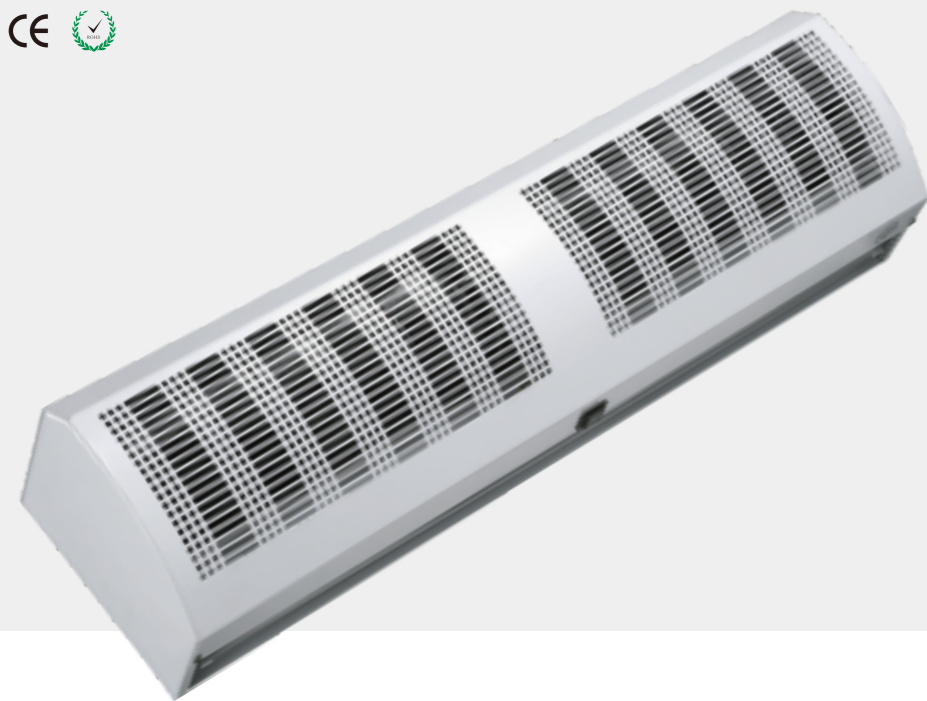


- **Fashionable appearance design:** Adopting quadrate hole punching design, making the panel stronger, fashion & elegant.
- **Improved air duct design and wheel design:** adopting 11cm wheel, convenient for assembling, bringing powerful, smooth and even air flow, making a great air curtain effect, and the installing height will be roundly 0.5m higher than competitor.
- **High efficiency motor:** Adopting self-made motor, powerful, low noise, more reliable.
- **Multi-control ways:** With remote control receiver and manual key design, the operation is more convenient, standard two speeds, three speeds for option, which is suitable for a variety of places.
- **Intelligent magnetic door switch (Optional):** Realize humanized control of door opening and closing, greatly reduce indoor air outflow and save energy.
- **Double voltage(For option):** Motor can be optional for 110V/220V, suitable for some area with double voltage like Taiwan, South America.

Parameters

Voltage/Frequency: 220-240V/50Hz, or 110V/60Hz, 110V/50Hz, 220V/60Hz are all available.

Model	Diameter of Impeller (mm)	Input Power (W)		Air Velocity (m/s)		Air Volume (m³/h)/CFM		Noise (dB)		Net Weight (KG)	Gross Weight (KG)	Unit Size (mm)	Carton Size (mm)	Mounting Height (m)
		H	L	H	L	H	L	H	L					
FM-1109G3-2(Y)	110	138	106.4	11.5	10.2	1500/882	1200/706	≤65	≤60	9.8	11.2	900x203x170	955x255x215	2.3-3
FM-1112G3-2(Y)	110	166	124.8	11.1	9.7	1900/1117	1700/1000	≤65	≤60	12.3	14.6	1200x203x170	1255x255x215	2.3-3
FM-1115G3-2(Y)	110	210	180	10.8	10	2500/1470	2200/1176	≤65	≤60	14.5	16.4	1500x203x170	1555x255x215	2.3-3



N CROSS FLOW AIR CURTAIN

- **Classic curved panel design:** hexagonal hole + rounded rectangular embossing, fashionable and atmospheric, and the panel is more rigid.
- **Mature product structure:** mature model, stable performance, convenient installation and maintenance, stable air flow to slow the air speed decays, and more significant air curtain effect.
- **High-efficiency motor + U-shaped motor bracket and special anti-vibration rubber:** using self-produced motor, strong power, with U-shaped motor bracket and special anti-vibration glue, low noise and reliable performance.
- **Multi control modes:** adopt remote control and manual button mode, the operation is more convenient, standard 2-speed wind speed, can be 3 speeds for option, suitable for use in a variety of places.
- **Intelligent magnetic door switch (optional):** realize the humanized control of door opening and closing, greatly reduce the outflow of indoor air, and save more energy.
- **Can be equipped with air inlet filter.**



SUPER UV LIGHT GERMICIDAL AIR CURTAIN

- The UV lamp uses high-quality high-purity quartz material, with a service life of 8000 ~ 13000 hours;
- High-power ozone-free type UV lamp, the main spectrum is 253.7nm, which can kill all kinds of bacteria, viruses and microorganisms;
- UV light decay is small, and the UV intensity decay is less than 30% during its life;
- Effectively isolate outdoor bacteria, bugs and dust;
- Disinfection and discharge of indoor air, to reach air recycling;
- Also can run only UV lamp sterilization function.



Parameters

Voltage/Frequency: 220-240V/50Hz, or 110V/60Hz, 110V/50Hz, 220V/60Hz are all available.

Model	Diameter of Impeller (mm)	Input Power (W)	Air Velocity (m/s)	Air Volume (m³/h)/CFM	Noise (dB)	Net Weight (KG)	Gross Weight (KG)	Unit Size (mm)	Carton Size (mm)	Mounting Height (m)
FLOW 600	120	120	11.0	1190/700	≤42	9.4	10.4	600×220×195	660×280×250	2.3-3
FLOW 900	120	150	11.0	1780/1047	≤45	12.8	14.3	900×220×195	960×280×250	2.3-3
FLOW 1000	120	180	11.0	1980/1164	≤45	13.8	15.5	1000×220×195	1060×280×250	2.3-3
FLOW 1200	120	180	11.0	2370/1394	≤47	15.7	17.7	1200×220×195	1260×280×250	2.3-3
FLOW 1500	120	220	11.0	2970/1747	≤47	19.9	22.4	1500×220×195	1560×280×250	2.3-3
FLOW 1800	120	280	11.0	3560/2094	≤50	23.0	26.0	1800×220×195	1860×280×250	2.3-3
FLOW 2000	120	320	11.0	3960/2329	≤51	24.5	28.0	2000×220×195	2060×280×250	2.3-3



Parameters

Mounting Height: 2.5-3m

Model	Voltage/Frequency (V/Hz)	Input Power (W)				Air Velocity (m/s)		Air Volume (m³/h)/CFM		Noise (dB)		Net Weight (KG)	Unit Size (mm)	Uv Power (W)	Uv Light Intensity (uw/cm²)
		UV ON		UV OFF		H	L	H	L	H	L				
		H	L	H	L										
FM-1209-UV1/2Y4	220/50	220	175	158	101.6	11	8.5	1780/1047	1375/809	≤46	≤43	16	900×234×266	37	120
FM-1212-UV1/2Y4	220/50	248	179	220	142	11	8.5	2370/1394	1830/1076	≤48	≤45	20	1200×234×266	40	135
FM-1215-UV1/2Y4	220/50	298	233	274	180	11	8.5	2970/1747	2230/1312	≤51	≤47	24	1500×234×266	55	170

NEW



T1

CENTRIFUGAL FLOW AIR CURTAIN

LUXURY DESIGN

- **Fashionable appearance design:** Adopting hexagonal hole punching, strong rigidity and fashion, serializing together with H3 and H5.
- **Unique segmented splice panel design:** front panel splicing with upper and lower plate, can be multi-matching as: white + black, all black, all white, etc.
- **High efficiency motor:** Adopting self-made motor, powerful, lower noise and more reliable.
- **Multi control ways:** With new generation remote control and manual key control design, the operation is more convenient, standard two speeds, three speeds for option, which is applicable for vary places.
- **Intelligent magnetic door switch (Optional):** Realizing humanized control of door opening and closing, greatly reduce indoor air outflow and save energy.



Parameters

Voltage/Frequency: 220-240V/50Hz, or 110V/60Hz, 110V/50Hz, 220V/60Hz are all available.

Model	Voltage/ Frequency (mm)	Input Power (W)		Air Velocity (m/s)		Air Volume (m³/h)/CFM		Noise (dB)		Unit Size (mm)	Mounting Height (m)
		H	L	H	L	H	L	H	L		
FM-3509T1-L/Y	220V/50Hz	223	163	16	12	1160/682	920/541	≤48	≤46	900x262x227	3-3.5
FM-3512T1-L/Y	220V/50Hz	284	208	16	12	1450/852	1170/688	≤47	≤45	1200x262x227	3-3.5
FM-3515T1-L/Y	220V/50Hz	370	272	16	12	1820/1070	1470/864	≤50	≤47	1500x262x227	3-3.5

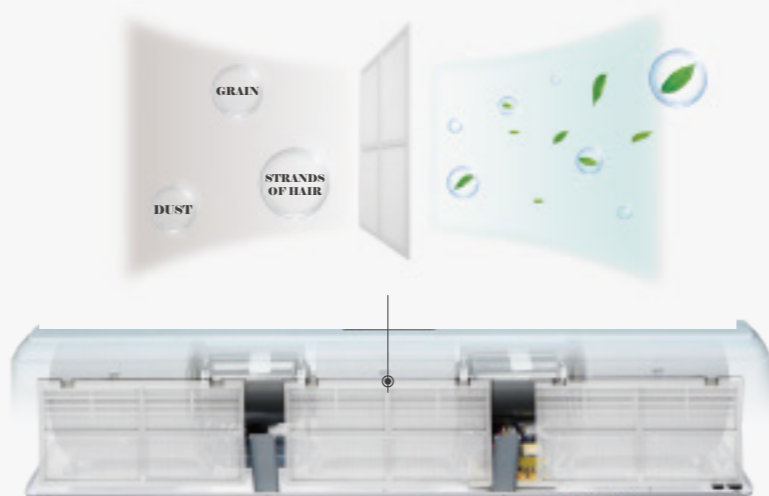




PLASTIC AIR CURTAIN



★ Design Patent No. : CN201610084246
★ Utility model patent No. : CN201620118698.1 CN201620113994.2



Dust Filter

- **Full plastic appearance design:** Adopt exclusive open-molded full-plastic appearance, high-end and fashionable. the model series is rich and range from 0.9-1.5 meters into a series, better than the others.
- **Unique integrated upper air inlet design:**the disassembled grille air inlet plate structure is convenient for product cleaning and maintenance, the centrifugal air duct design, high air pressure, large air volume, stable and uniform air outlet, and more significant air curtain effect.
- **High-efficiency motor:** use self-developed and self-produced motors, all copper wire motors with NSK bearings to ensure stable output of motor performance.

- **Remote and manual integrated control:** more convenient operation, standard 3-speed, suitable for use in more places.
- **Intelligent door magnetic switch (optional):** realize the humanized control of door opening and closing, greatly reduce the outflow of indoor air, and save more energy.
- Can be equipped with air inlet filter.

Parameters

Voltage/Frequency : 220-240V/50Hz, or 110V/60Hz, 110V/50Hz, 220V/60Hz are all available.

Model	Input Power (W)			Air Volume (m³/h)/CFM			Air Velocity (m/s)			Noise (dB)			Net Weight (KG)	Gross Weight (KG)	Unit Size (mm)	Carton Size (mm)	Mounting Height (m)
	H	M	L	H	M	L	H	M	L	H	M	L					
FM-3509QS-L(Y)(X)	200	180	150	1080/635	996/586	870/512	15.5	14.3	12.5	≤44	≤42	≤41	13.5	15	900x230x220	960x290x270	3-3.5
FM-3512QS-L(Y)(X)	250	225	185	1450/853	1337/786	1168/687	15.5	14.3	12.5	≤45	≤43	≤42	15.5	17.5	1200x230x220	1260x290x270	3-3.5
FM-3515QS-L(Y)(X)	325	290	240	1800/1059	1600/941	1398/822	15.5	14.3	12.5	≤48	≤46	≤44	20.5	23	1500x230x220	1560x290x270	3-3.5
FM-4509QS-L(Y)(X)	350	260	200	1320/776	1100/647	860/506	19	16	12.5	≤46	≤44	≤42	14	15.5	900x230x220	960x290x270	4-4.5
FM-4512QS-L(Y)(X)	440	320	225	1770/1041	1455/856	1150/676	19	16	12.5	≤47	≤45	≤43	16	18	1200x230x220	1260x290x270	4-4.5
FM-4515QS-L(Y)(X)	575	435	330	2200/1294	1850/1088	1450/853	19	16	12.5	≤50	≤47	≤45	21	23.5	1500x230x220	1560x290x270	4-4.5
FM-5509QS-L(Y)(X)	440	325	250	1520/894	1270/747	1000/588	22	18.5	14.5	≤52	≤50	≤47	14.5	16	900x230x220	960x290x270	5-5.5
FM-5512QS-L(Y)(X)	530	385	270	2027/1192	1670/1044	1330/782	22	18.5	14.5	≤54	≤52	≤50	16.5	18.5	1200x230x220	1260x290x270	5-5.5
FM-5515QS-L(Y)(X)	710	535	405	2543/1496	2135/1256	1680/988	22	18.5	14.5	≤55	≤53	≤51	21.5	24	1500x230x220	1560x290x270	5-5.5



CENTRIFUGAL FLOW AIR CURTAIN

- **Luxurious appearance design:** adopts a full panel aluminum alloy design, which is high-end and fashionable. The panel is flat and easy to clean;
- **Unique centrifugal air duct design:** strong air flow, stable and even air outlet, and more significant air curtain effect;
- **High-efficiency motor + U-shaped motor bracket and special anti-vibration rubber:** using self-produced motor, strong power, with U-shaped motor bracket and special anti-vibration rubber, low noise and reliable performance;
- **Multi control modes:** adopt remote control and manual button mode, the operation is more convenient, standard 2-speed wind speed, can be 3 speeds for option, suitable for use in a variety of places.
- **Intelligent magnetic door switch (optional):** realize the humanized control of door opening and closing, greatly reduce the outflow of indoor air, and save more energy.

Parameters

Voltage/Frequency : 220-240V/50Hz, or 110V/60Hz, 110V/50Hz, 220V/60Hz are all available.

Model	Diameter of Impeller (mm)	Input Power (W)	Air Velocity (m/s)	Air Volume (m³/h)/CFM	Noise (dB)	Net Weight (KG)	Gross Weight (KG)	Unit Size (mm)	Carton Size (mm)	Mounting Height (m)
FM-3509Z(L)-L(Y)	120	200	14.5	1020/600	≤44	15.0	16.5	900x230x215	960x290x280	3-3.5
FM-3510Z(L)-L(Y)	120	200	14.5	1020/600	≤44	15.5	17.2	1000x230x215	1060x290x280	3-3.5
FM-3512Z(L)-L(Y)	120	240	14.5	1360/800	≤45	16.0	18.0	1200x230x215	1260x290x280	3-3.5
FM-3515Z(L)-L(Y)	120	320	14.5	1700/1000	≤48	21.5	24.0	1500x230x215	1560x290x280	3-3.5
FM-3518Z(L)-L(Y)	120	360	14.5	2040/1200	≤50	23.0	26.0	1800x230x215	1860x290x280	3-3.5
FM-3520Z(L)-L(Y)	120	360	14.5	2040/1200	≤50	25.0	28.5	2000x230x215	2060x290x280	3-3.5
FM-4509Z(L)-L(Y)	120	280	18.0	1260/741	≤46	15.5	17.0	900x230x215	960x290x280	4-4.5
FM-4510Z(L)-L(Y)	120	280	18.0	1260/741	≤46	16.0	17.7	1000x230x215	1060x290x280	4-4.5
FM-4512Z(L)-L(Y)	120	360	18.0	1680/988	≤47	16.5	18.5	1200x230x215	1260x290x280	4-4.5
FM-4515Z(L)-L(Y)	120	450	18.0	2100/1235	≤50	22.5	25.0	1500x230x215	1560x290x280	4-4.5
FM-4518Z(L)-L(Y)	120	550	18.0	2520/1482	≤52	23.5	26.5	1800x230x215	1860x290x280	4-4.5
FM-4520Z(L)-L(Y)	120	550	18.0	2520/1482	≤52	25.5	29.0	2000x230x215	2060x290x280	4-4.5
FM-5509Z(L)-L(Y)	120	420	20.0	1450/853	≤48	16.0	17.5	900x230x215	960x290x280	5-5.5
FM-5510Z(L)-L(Y)	120	420	20.0	1450/853	≤48	16.3	18.0	1000x230x215	1060x290x280	5-5.5
FM-5512Z(L)-L(Y)	120	560	20.0	1930/1135	≤49	16.8	18.8	1200x230x215	1260x290x280	5-5.5
FM-5515Z(L)-L(Y)	120	700	20.0	2420/1424	≤52	22.5	25.0	1500x230x215	1560x290x280	5-5.5
FM-5518Z(L)-L(Y)	120	800	20.0	2900/1706	≤54	24.5	27.5	1800x230x215	1860x290x280	5-5.5
FM-5520Z(L)-L(Y)	120	800	20.0	2900/1706	≤54	26.5	30.0	2000x230x215	2060x290x280	5-5.5





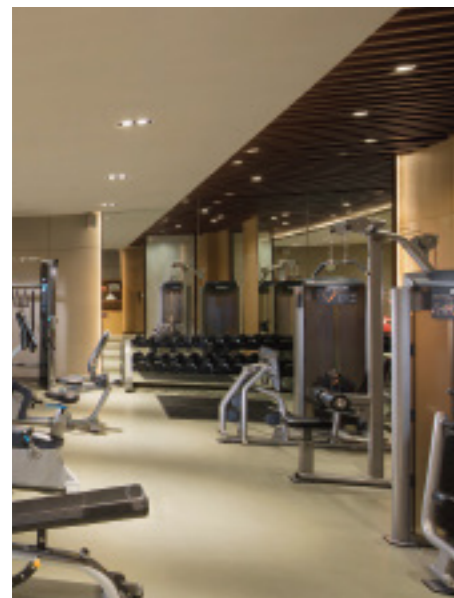
N CENTRIFUGAL FLOW AIR CURTAIN

- **Classic curved panel design:** hexagonal hole + rounded rectangular embossing, fashionable and atmospheric, and the panel is more rigid
- **Mature product structure:** mature model, stable performance, convenient installation and maintenance, stable air flow to slow the air speed decays, and more significant air curtain effect
- **High-efficiency motor:** use self-developed, self-produced motor, coupled with low-noise, high-speed centrifugal volute, strong power, low noise, and reliable performance
- **Multi control modes:** adopt remote control and manual button mode, the operation is more convenient, standard 2-speed wind speed, can be 3 speeds for option, suitable for use in a variety of places.
- **Intelligent magnetic door switch (optional):** realize the humanized control of door opening and closing, greatly reduce the outflow of indoor air, and save more energy
- Can be equipped with air inlet filter

Parameters

Voltage/Frequency: 220-240V/50Hz, or 110V/60Hz, 110V/50Hz, 220V/60Hz are all available.

Model	Diameter of Impeller (mm)	Input Power (W)	Air Velocity (m/s)		Air Volume (m³/h)/CFM	Noise (dB)		Net Weight (KG)	Gross Weight (KG)	Unit Size (mm)	Carton Size (mm)	Mounting Height (m)
			H	L		H	L					
FM-3509-L(Y)	120	230	14.5	14.5	1020/600	≤44	≤44	16.0	17.5	900×220×212	960×290×270	3-3.5
FM-3510-L(Y)	120	230	14.5	14.5	1020/600	≤44	≤44	17.5	19.8	1000×220×212	1060×290×270	3-3.5
FM-3512-L(Y)	120	305	14.5	14.5	1360/800	≤45	≤45	19.0	21.0	1200×220×212	1260×290×270	3-3.5
FM-3515-L(Y)	120	380	14.5	14.5	1700/1000	≤48	≤48	25.0	27.5	1500×220×212	1560×290×270	3-3.5
FM-3518-L(Y)	120	450	14.5	14.5	2040/1200	≤51	≤51	30.0	33.0	1800×220×212	1860×290×270	3-3.5
FM-4509-L(Y)	120	360	18.0	18.0	1260/741	≤46	≤46	16.5	18.0	900×220×212	960×290×270	4-4.5
FM-4510-L(Y)	120	360	18.0	18.0	1260/741	≤46	≤46	17.5	19.3	1000×220×212	1060×290×270	4-4.5
FM-4512-L(Y)	120	495	18.0	18.0	1680/988	≤47	≤47	21.0	23.0	1200×220×212	1260×290×270	4-4.5
FM-4515-L(Y)	120	605	18.0	18.0	2100/1235	≤50	≤50	26.0	29.5	1500×220×212	1560×290×270	4-4.5
FM-4518-L(Y)	120	750	18.0	18.0	2520/1482	≤53	≤53	30.5	33.5	1800×220×212	1860×290×270	4-4.5
FM-5509-L(Y)	120	450	21.0	21.0	1520/894	≤52	≤52	17.5	19.0	900×220×212	960×290×270	5-5.5
FM-5510-L(Y)	120	450	21.0	21.0	1520/894	≤52	≤52	19.0	20.8	1000×220×212	1060×290×270	5-5.5
FM-5512-L(Y)	120	600	21.0	21.0	2027/1192	≤54	≤54	21.5	23.5	1200×220×212	1260×290×270	5-5.5
FM-5515-L(Y)	120	750	21.0	21.0	2534/1490	≤55	≤55	27.0	29.5	1500×220×212	1560×290×270	5-5.5
FM-5518-L(Y)	120	900	21.0	21.0	3040/1788	≤58	≤58	31.0	34.0	1800×220×212	1860×290×270	5-5.5



CENTRIFUGAL FLOW AIR CURTAIN



Parameters

Voltage/Frequency: 220-240V/50Hz, or 110V/60Hz, 110V/50Hz, 220V/60Hz are all available.

Model	Input Power (W)		Air Velocity (m/s)		Air Volume (m³/h)/CFM		Noise (dB)		Net Weight (KG)	Gross Weight (KG)	Unit Size (mm)	Carton Size (mm)	Remarks
	H	L	H	L	H	L	H	L					
FM-3509XD(B)-L(Y)	210	157	15.5	12.5	1090/641	880/518	≤45	≤43	17.5	19	900x245x233	950x315x270	Stainless Steel(PCM)
FM-3510XD(B)-L(Y)	210	157	15.5	12.5	1090/641	880/518	≤45	≤43	18.8	20.5	1000x245x233	1050x315x270	Stainless Steel(PCM)
FM-3512XD(B)-L(Y)	280	211	15.5	12.5	1450/853	1170/688	≤47	≤45	21	23	1200x245x233	1250x315x270	Stainless Steel(PCM)
FM-3515XD(B)-L(Y)	350	258	15.5	12.5	1820/1070	1470/865	≤50	≤47	27	29.5	1500x245x233	1550x315x270	Stainless Steel(PCM)
FM-3518XD(B)-L(Y)	424	315	15.5	12.5	2200/1276	1758/1030	≤53	≤50	31.5	34.5	1800x245x233	1850x315x270	Stainless Steel(PCM)
FM-3520XD(B)-L(Y)	424	315	15.5	12.5	2200/1276	1758/1030	≤53	≤50	34.5	37.5	2000x245x233	2050x315x270	Stainless Steel(PCM)
FM-4509XD(B)-L(Y)	300	224	19.0	15.5	1400/842	1090/641	≤48	≤46	18	19.5	900x245x233	950x315x270	Stainless Steel(PCM)
FM-4510XD(B)-L(Y)	300	224	19.0	15.5	1400/842	1090/641	≤48	≤45	19.3	21	1000x245x233	1050x315x270	Stainless Steel(PCM)
FM-4512XD(B)-L(Y)	400	310	19.0	15.5	1850/1088	1450/853	≤49	≤47	21.5	23.5	1200x245x233	1250x315x270	Stainless Steel(PCM)
FM-4515XD(B)-L(Y)	500	379	19.0	15.5	2270/1335	1820/1071	≤52	≤52	32.0	35	1800x245x233	1850x315x270	Stainless Steel(PCM)
FM-4518XD(B)-L(Y)	610	480	19.0	15.5	2800/1635	2170/1276	≤55	≤52	35.0	38	2000x245x233	2050x315x270	Stainless Steel(PCM)
FM-4520XD(B)-L(Y)	610	480	19.0	15.5	2800/1635	2170/1276	≤55	≤50	27.5	30	1500x245x233	1550x315x270	Stainless Steel(PCM)
FM-5509XD(B)-L(Y)	415	310	22.0	18.5	1550/912	1300/765	≤52	≤50	18.5	20	900x245x233	950x315x270	Stainless Steel(PCM)
FM-5510XD(B)-L(Y)	415	310	22.0	18.5	1550/912	1300/765	≤52	≤50	19.8	21.5	1000x245x233	1050x315x270	Stainless Steel(PCM)
FM-5512XD(B)-L(Y)	520	430	22.0	18.5	1850/1088	1680/988	≤53	≤51	22	24	1200x245x233	1250x315x270	Stainless Steel(PCM)
FM-5515XD(B)-L(Y)	705	534	22.0	18.5	2300/1352	2100/1235	≤56	≤53	28	30.5	1500x245x233	1550x315x270	Stainless Steel(PCM)
FM-5518XD(B)-L(Y)	840	702	22.0	18.5	3240/1905	2400/1411	≤59	≤55	32.5	36.0	1800x245x233	1850x315x270	Stainless Steel(PCM)
FM-5520XD(B)-L(Y)	840	702	22.0	18.5	3240/1905	2400/1411	≤59	≤55	35.5	38.5	2000x245x233	2050x315x270	Stainless Steel(PCM)



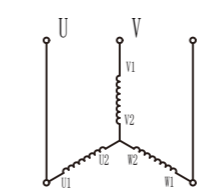


36.5m / s

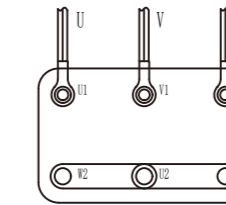
Large Air Volume Industrial Air Curtain (Centrifugal Type)

- **Integrated appearance design:** the panel and the air outlet are integrally designed, simple and elegant,
- **Unique air inlet and outlet design:** The structure design of three air deflectors ensures that the air outlet is more uniform and stable. and the wind speed can reach 35m/s;
- **High-efficiency motor:** The high-power and high-efficiency 3-phase motor is equipped with a high-speed centrifugal volute, which has strong power, high wind speed and large air volume, which is suitable for higher requirements.
- **Flexible switching of various voltages:** The 3 groups of motor lead wires can be flexibly adjusted for different wiring methods to meet the use of different voltages such as 3-phase 380V/220V.

3 Phase 380V

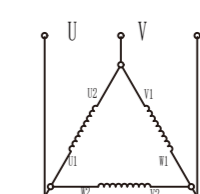


Schematic Diagram

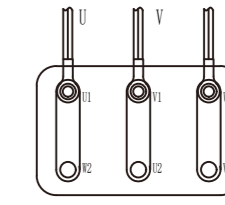


Wiring Diagram

3 Phase 220V



Schematic Diagram



Wiring Diagram

Dual voltages universal

Parameters

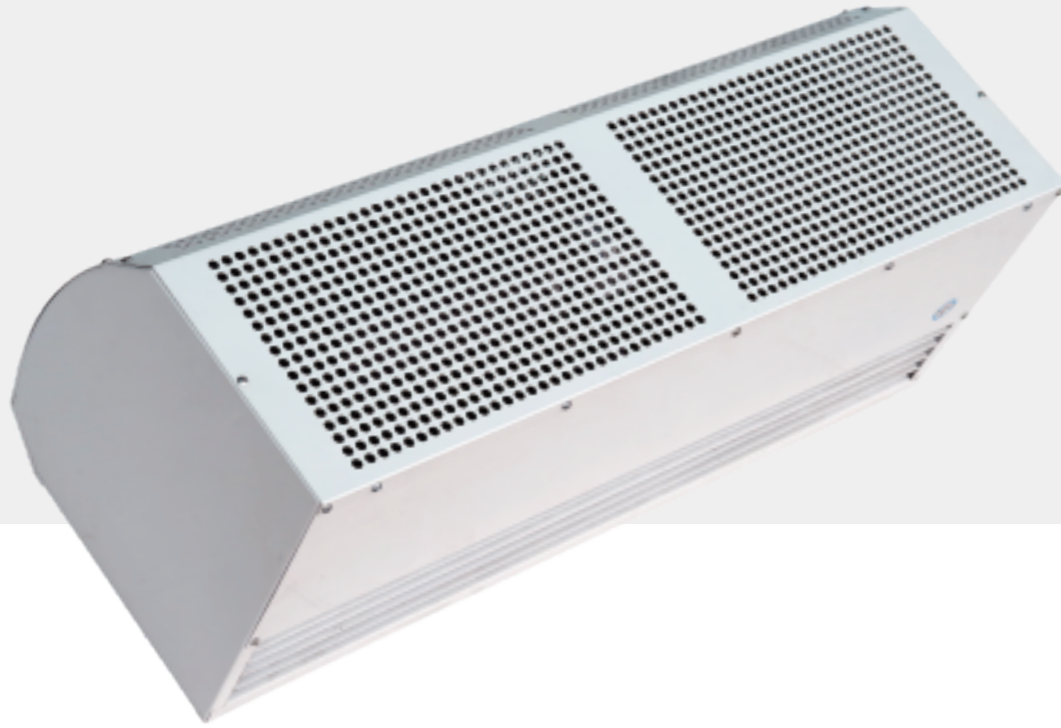
110V/60Hz, 110V/50Hz, 220V/60Hz are all available.

Model	Voltage (V)	Frequency (Hz)	Input Power (W)	Air Velocity (m/s)	Air Volume (m³/h)/CFM	Noise (dB)	Net Weight (KG)	Gross Weight (KG)	Unit Size (mm)	Mounting Height (m)
FM-8009GY	380	60	1564	36.5	10000/5882	≤86	35	38	900*300*320	8
FM-8009GY	220	60	1680	36.5	10000/5882	≤86	35	38	900*300*320	8

NEW

INDUSTRIAL AIR CURTAIN- CENTRIFUGAL TYPE

- Metal housing for fire resistance.
- Powder coating for rust free.
- New ventilating air duct gives a high pressure, and mouthing height up to 6-8 meters.



COLD ROOM AIR CURTAIN

- Blower driving by external rotator motor, running.
- Higher air pressure.
- Cylinder type air outlet, stable and uniform air supply
- Whole machine spraying antirust processing.



Parameters

110V/60Hz, 110V/50Hz, 220V/60Hz are all available.

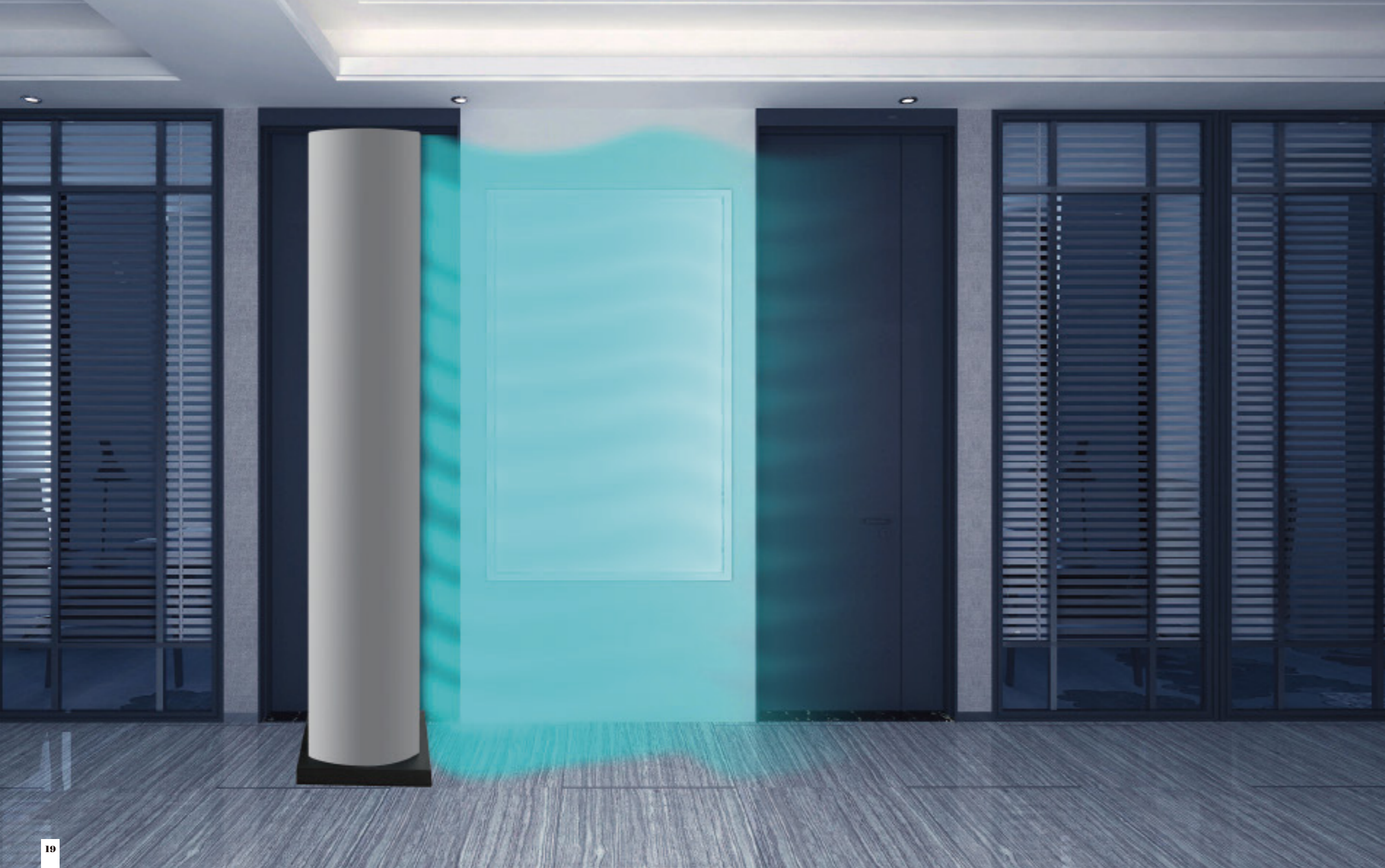
Model	Voltage/ Frequency (V/Hz)	Diameter of Impeller (mm)	Input Power (W)	Air Velocity (m/s)	Air Volume (m³/h)/CFM	Noise (dB)	Net Weight (KG)	Gross Weight (KG)	Unit Size (mm)	Carton Size (mm)	Mounting Height (m)
FM-6009GY	220-240/50	160	800	21.0	3500/2059	≤63	42.0	44.0	914×345×351	988×410×417	6-7
FM-6012GY	220-240/50	160	1200	21.0	4650/2735	≤65	47.5	50.0	1218×345×351	1292×410×417	6-7
FM-6015GY	220-240/50	160	1600	21.0	5700/3353	≤66	58.0	62.0	1523×345×351	1597×410×417	6-7
FM-6009GY	380/50	160	1100	24.0	3750/2206	≤65	42.0	44.0	914×345×351	988×410×417	6-8
FM-6012GY	380/50	160	1600	24.0	5000/2941	≤66	47.5	50.5	1218×345×351	1292×410×417	6-8
FM-6015GY	380/50	160	2200	24.0	6250/3677	≤68	58.0	62.0	1523×345×351	1597×410×417	6-8



Parameters

110V/60Hz, 110V/50Hz, 220V/60Hz are all available.

Model	Voltage (V)	Frequency (Hz)	Diameter of Impeller (mm)	Input Power (W)	Air Velocity (m/s)	Air Volume (m³/h)/CFM	Noise (dB)	Net Weight (KG)	Gross Weight (KG)	Unit Size (mm)	Mounting Height (m)
FM-2515LKM	220/240/380	50	Φ250	550	20	3200/1882	≤72	32	40	1906×406×424	2.5-3
FM-2518LKM	220/240/380	50	Φ250	750	20	3800/2235	≤74	34	42	2206×406×424	2.5-3
FM-2520LKM	220/240/380	50	Φ250	750	20	4300/2529	≤75	37	44	2406×406×424	2.5-3



NEW

CC

VERTICAL AIR CURTAIN
LUXURY DESIGN

- Full metal housing, curved surface appearance, elegant design;
- Axial flow multi-fan structure, stable operation and large air volume;
- No installation required, can be floor standing, suitable for places that cannot be installed on the wall.



Parameters

Model	Voltage (V)	Frequency (Hz)	Input Power (W)	Air Velocity (m/s)	Air Volume (m³/h)/CFM	Unit Size (mm)
FM-CC2000	220	50	580	10-12	4500/2647	400x400x2050