



**CANNELLE**

**YOUR WORLDWIDE SUPPLY PARTNER**

# YOUR WORLDWIDE SUPPLY PARTNER

---

## INTRODUCTION

**Cannelle** was established in 2001 with a vision to grow, a will to create and contribute to society. This journey began in downtown old Dubai trading in Fast Moving Consumer Goods and Commodities. 20 years in business has helped us to identify our strengths. The company has diversified into different sectors and in different countries with specialized teams to handle each business unit. We now operate out of our office/ logistics center in the Jebel Ali Free Zone with independent offices in Iraq. Our focus has always been our client and we aim to provide them the best products & service. This has helped us to maintain our client base and to increase our reach all over the Middle East & Africa. As policy we only deal with quality products. In the process we have created associations with reputed International Companies.

## OUR VISION

Our vision is to create, grow and contribute to the society.

## OUR MISSION

Endeavor to bring new technologies to challenge the traditional products that have been utilized in the market.





CAMBRIDGE-LEE INDUSTRIES LLC

## COPPER PIPES & COILS

IUSA CAMBRIDGE LEE INDUSTRIES LLC a reputed Manufacturer of Copper Tubes & Coils to ASTM B280 / B 88 Standards. Widely accepted & Approved by many of the leading Clients, Consultants & Contractors in the Middle East. Recommended by major VRF manufacturers.

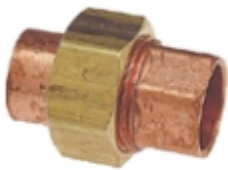




AHEAD OF THE FLOW

## Copper Fittings

An ISO 9002 Manufacturer of quality, Durable and reliable fittings. Wide range of Wrot, Cast & Press ACR fittings From 1/4" to 8". Preferred brand among MEP Contractors backed by a 50 year limited warranty.



# NIBCO

AHEAD OF THE FLOW

Manufacturers of high quality general duty valves



Gate Valve



Strainer



Double Regulating Valve



Check Valves



Butterfly Valve



Ball Valve

Belven is a Belgium based company with over 40 years of experience in valves production. We are present in over 50 countries and have solutions for both the building and the industrial market.



**Gate Valve**



**Double Regulating Valve**



**Butterfly Valve**



**Remote Modulating Float Control Valve**



**Strainer**



**Check Valves**



**Pressure Reducing Valve**



**Pressure Reducing Valve**



**Water Hammer Arrestor**



**Pressure Gauge**



**Thermometer**



**Rubber Bellow**



Refrigerant Gas



Capacitor



Liquid Line Filter  
Drier



Contactor



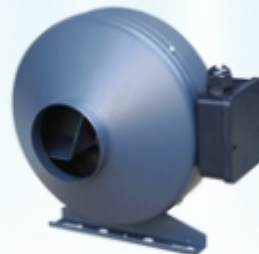
Air Conditioning  
Bracket



Flaring Tools



Mixed Flow Fans



Circular Duct Fan



Wall mounted ceiling



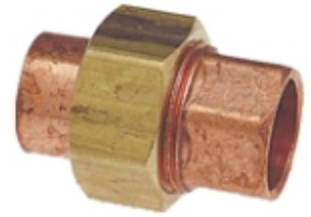
Kitchen Exhaust



Hight Efficiency HRV

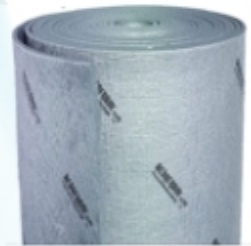


Aircurtain

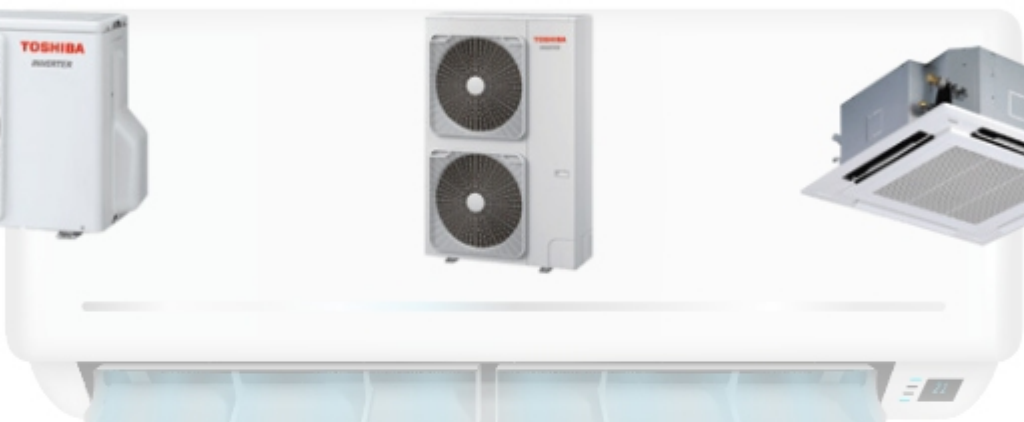


Adhesives and sealants

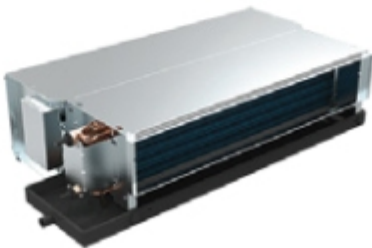
Insulation



# TOSHIBA



# GREE

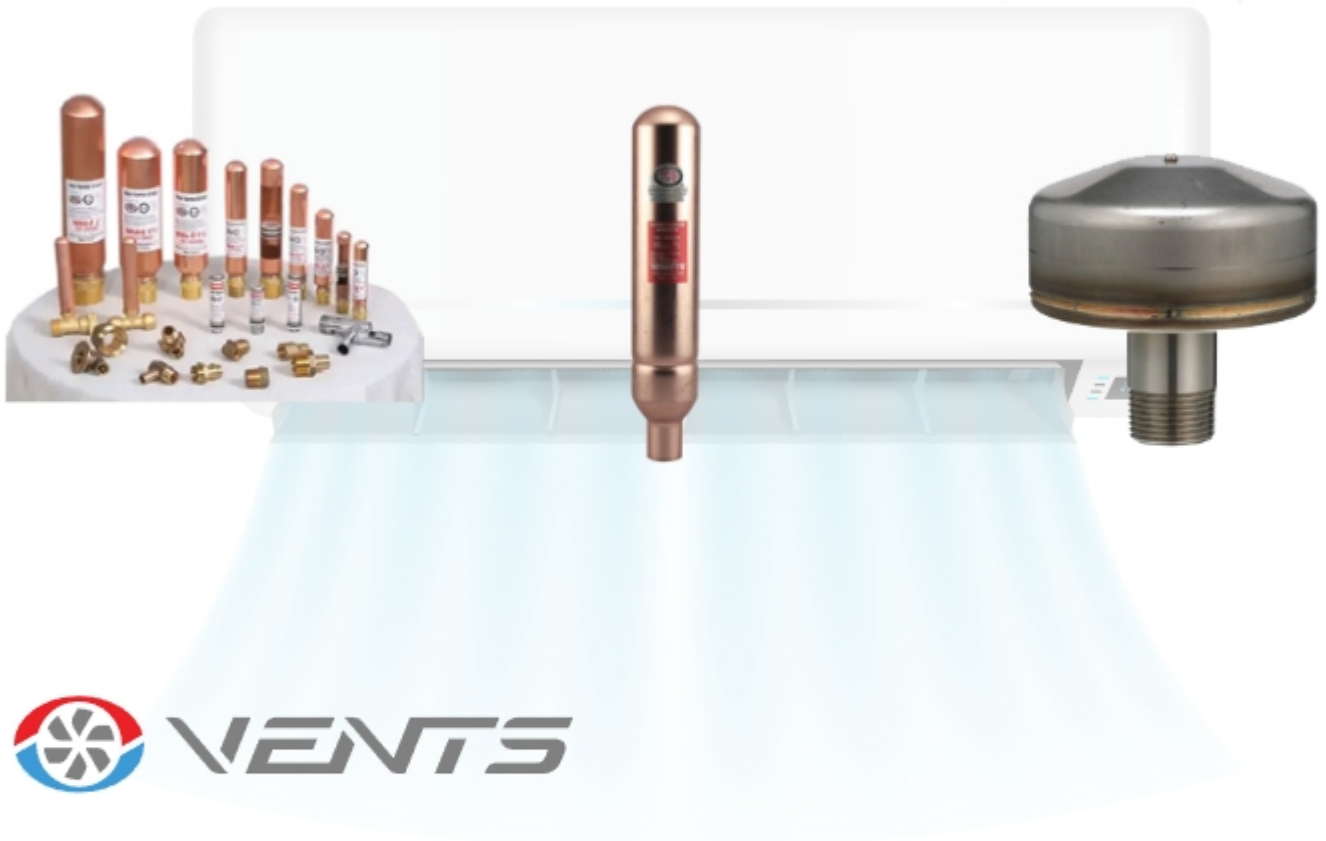




# SURGETROL



Water Hammer Arrestors



# EVERHOT



**TEAFLEX®**  
INDUSTRIAL CABLE PROTECTION



Flexible HDPE Cable Conduit



KIO Composite Manhole Covers to EN 124 Standards



# YOUR WORLDWIDE SUPPLY PARTNER



## CONTACT US

### Head office

Cannelle Holdings FZE  
P.O. Box - 261660

Jebel Ali, Dubai, U.A.E

Tel: +971 4 8861858

[info@cannelleholdings.com](mailto:info@cannelleholdings.com)

### Branches

Deira

Al Quoz

Abu Dhabi

Sharjah

Ajman



[www.cannelleholdings.com](http://www.cannelleholdings.com)

